

# ENSURING EVERY CONNECTION



THREAD PROTECTION

PIPE, VALVE, FLANGE & FITTING PROTECTION





As part of the Caplugs plastic molding family, Tri-Star Protectors has the manufacturing capability to provide superior new thread protection. Tri-Star continues the tradition of excellent customer service and are now the largest source of new and reconditioned thread protectors in the industry.

- Widest range of products in American Petroleum Institute and premium thread types
- Unmatched inventory for immediate delivery
- ISO-9001

#### NOT FAMILIAR WITH CAPPLUGS? HERE'S SOME BACKGROUND.

- Caplugs has been the leader in product protection since 1948
- More than 12,000 catalog items in stock and ready to ship
- Specializes in product protectors
- 400 million parts inventoried for immediate shipment
- 6 different molding processes
- In-house tool room & team of design engineers for custom designs
- 6 manufacturing facilities spanning the globe to service our multinational customers



---

## TABLE OF CONTENTS

- 2** From Upstream to Downstream, We Protect Your Products

### SECTION 1: OCTG THREAD PROTECTION

- 6** Tubing and Casing Protection:
  - Level 1: Standard-Duty Thread Protectors
  - Level 2: Heavy-Duty Thread Protectors
  - Level 3: Premium-Duty Thread Protectors
- 14** Drill Pipe Protection
- 15** Sucker Rod Protection
- 16** OCTG Accessories
- 17** Hammer Union and Pup Joint Protection

### SECTION 2: RECONDITIONED THREAD PROTECTION

- 18** Reconditioned Thread Protection and Recycling

### SECTION 3: PIPE, VALVE, FLANGE AND FITTING PROTECTION

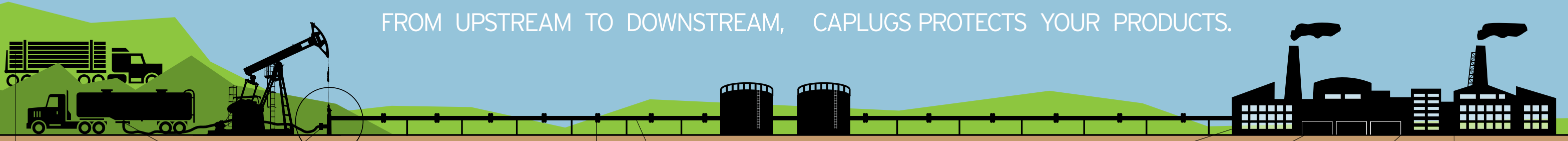
- 22** Pipe Caps
- 27** Flange Covers

---

**Fastest** delivery in the industry.

---

FROM UPSTREAM TO DOWNSTREAM, CAPPLUGS PROTECTS YOUR PRODUCTS.



**Hammer Union Protection**

**HU Series**  
Keeps wing nut threads covered.

**FHU Series**  
Threaded cap to protect the female subcomponent.



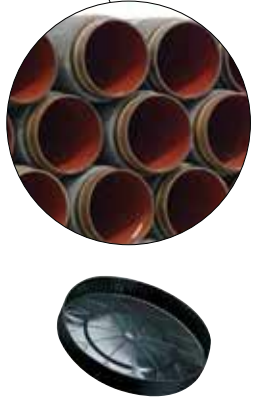
**Polished Sucker Rod Protection**

**PSR Series**  
Threaded caps protect pin end threads during shipping and storage.



**Plastic Caps for Pipe Ends**

**CE Series**  
Closed-end caps to cover pipes prior to connection.



Protect pipe ends from damage, dirt, debris and other contaminants during shipping and storage.

**Open-End Thread Protectors**  
**OE Series**

**Plastic Caps for Pipe Ends**  
**CE Series**

**Vented Pipe Caps**  
**VP Series**

**Bevel-Edge Protectors for Pipe Ends**  
**EPN-250**

Cover raised- and full-faced flanges as well as machined surfaces of welding necks to keep free from damage, debris and other contaminants during shipping and storage.

**Weld Neck Protection**  
**WNC Series**

**Raised-Face Flange Protectors**  
**RFP Series**

**Vinyl Snap Ring Flange Covers**  
**VSR Series**

**Flange Protectors with Matching Bolt Holes**  
**FAN Series**

**Toggle Lock Flange Covers**  
**TLF Series**

**Push-In Flange Protectors**  
**EPN-305**

**Pipe Chocks**  
Help hold pipes in place during shipping and storage.

**Bumper Rings**  
Help avoid contact between pipes during shipping and storage.

**Standard-Duty Thread Protectors**  
**NSD Series**  
A lightweight safeguard to protect API threads of tubing and casing during shipping and storage.

**Heavy-Duty Thread Protectors**  
**NMD Series**  
Protects API threads of tubing and casing during shipping and storage.

**Standard-Duty Well Casing Covers**  
For buttress, long and short threads  
**GRIP IT & RIP IT™**  
**BUT, CLT and CST Series**  
Protect the pin ends during transport for rig-ready shipments.

**Toggle Lock Flange Covers**  
**TLF Series**  
Shields API well head flanges, protecting the raised face and covering the bore opening.

**Sucker Rod Protection**  
**SSR Series**  
Protects pin end threads during shipping and storage.

**Composite Premium Thread Protectors**

**Premium Thread Protectors**

**Toggle Lock Flange Covers**  
**TLF Series**  
Shields ANSI B16.5 flange faces prior to installation.

**Standard-Duty Tubing Protection**  
For upset and non-upset threaded ends  
**GRIP IT & RIP IT™**  
**UEO and NUO Series**  
Secure tubing pin end threads during shipping for rig-ready orders.

PROTECT WHERE IT MATTERS



# OCTG THREAD PROTECTION

## GET THE RIGHT PROTECTION AT THE RIGHT PRICE

Tri-Star offers three different levels of protection to accommodate the varying environments of transport and storage. Each level has been designed to offer a different degree of protection at a value price point. Offering options ensures that you get the right level of protection at the right price.

### THREE LEVELS OF THREAD PROTECTION



Tri-Star's Standard Thread Protector is a lightweight safeguard for rig-ready casing and tubing. Our standard solutions are ideal for less demanding applications such as short-term transportation and storage.

Our Heavy-Duty Thread Protector is a heavier and more durable alternative to the Standard-Duty Thread Protector. This economical product can be used for both long-term transportation and storage.

Tri-Star's Premium-Duty line offers a durable product for the most grueling applications. The Premium-Duty Thread Protector provides the most rugged protection for transportation and storage of a broad range of tubular goods.



## ADDITIONALLY, TRI-STAR OFFERS RECONDITIONED THREAD PROTECTORS

If your application doesn't need a new protector, use one of our quality-tested reconditioned protectors for even more savings. We have the largest inventory of reconditioned products in the industry, covering tubing, casing, drill pipe for API and premium connections ranging from 2 3/8" and up.

# TUBING AND CASING PROTECTORS - STANDARD DUTY



## NSD Tubing NSD Series

Engineered for ease of use and durability, our Standard-Duty Protectors ensure threads are secure.

User-friendly, Standard-Duty Thread Protectors are:

- Available in API EUE 8-round and NUE 10-round threads
- Effective for short-term transportation and long-term storage
- ISO-certified consistent quality



**Material:** High-Density Polyethylene **Standard Color:** Black

Caplugs No.	Description	Carton Quantity
NSD100EUE-CE-BQ5	1 EUE CLOSED END BOX 10RD	500
NSD100EUE-CE-PQ5	1 EUE CLOSED END PIN 10RD	500
NSD100NUE-CE-BQ5	1 NUE CLOSED END BOX 10RD	650
NSD100NUE-CE-PQ5	1 NUE CLOSED END PIN 10RD	650
NSD114EUE-CE-BQ5	1 1/4 EUE CLOSED END BOX 10RD	350
NSD114EUE-CE-PQ5	1 1/4 EUE CLOSED END PIN 10RD	350
NSD114NUE-CE-BQ5	1 1/4 NUE CLOSED END BOX 10RD	450
NSD114NUE-CE-PQ5	1 1/4 NUE CLOSED END PIN 10RD	450
NSD112EUE-CE-BQ5	1 1/2 EUE CLOSED END BOX 10RD	250
NSD112EUE-CE-PQ5	1 1/2 EUE CLOSED END PIN 10RD	250
NSD112NUE-CE-BQ5	1 1/2 NUE CLOSED END BOX 10RD	350
NSD112NUE-CE-PQ5	1 1/2 NUE CLOSED END PIN 10RD	350
NSD238EUE-CE-BQ5	2 3/8 EUE CLOSED END BOX	294
NSD238EUE-CE-PQ5	2 3/8 EUE CLOSED END PIN	294
NSD238EUE-OE-BQ5	2 3/8 EUE OPEN END BOX	294
NSD238EUE-OE-PQ5	2 3/8 EUE OPEN END PIN	294
NSD238NUE-CE-BQ5	2 3/8 NUE CLOSED END BOX	413
NSD238NUE-CE-PQ5	2 3/8 NUE CLOSED END PIN	444
NSD238NUE-OE-BQ5	2 3/8 NUE OPEN END BOX	413
NSD238NUE-OE-PQ5	2 3/8 NUE OPEN END PIN	444
NSD278EUE-CE-BQ5	2 7/8 EUE CLOSED END BOX	180
NSD278EUE-CE-PQ5	2 7/8 EUE CLOSED END PIN	180
NSD278EUE-OE-BQ5	2 7/8 EUE OPEN END BOX	180
NSD278EUE-OE-PQ5	2 7/8 EUE OPEN END PIN	180
NSD278NUE-CE-BQ5	2 7/8 NUE CLOSED END BOX	250
NSD278NUE-CE-PQ5	2 7/8 NUE CLOSED END PIN	250
NSD278NUE-OE-BQ5	2 7/8 NUE OPEN END BOX	250
NSD278NUE-OE-PQ5	2 7/8 NUE OPEN END PIN	250
NSD312EUE-CE-BQ5	3 1/2 EUE CLOSED END BOX LONG SKIRT	150
NSD312EUE-CE-PQ5	3 1/2 EUE CLOSED END PIN LONG SKIRT	150
NSD312EUE-OE-BQ5	3 1/2 EUE OPEN END BOX	200
NSD312EUE-OE-PQ5	3 1/2 EUE OPEN END PIN	150
NSD312NUE-CE-BQ5	3 1/2 NUE CLOSED END BOX	125
NSD312NUE-CE-PQ5	3 1/2 NUE CLOSED END PIN	125
NSD312NUE-OE-BQ5	3 1/2 NUE OPEN END BOX	125
NSD312NUE-OE-PQ5	3 1/2 NUE OPEN END PIN	125

## NSD Casing NSD Series

Engineered for ease of use and durability, our Standard-Duty Protectors ensure threads are protected.

User-friendly, Standard-Duty Thread Protectors are:

- Available in API round and buttress threads
- Effective for short-term transportation and long-term storage
- ISO-certified consistent quality



**Material:** High-Density Polyethylene **Standard Color:** Black

Caplugs No.	Description	Carton Quantity
NSD412-2STC-OE-PQ5	4 1/2 2 IN. STC SKIRT OPEN END PIN	175
NSD412STC-OE-PQ5	4 1/2 STC OPEN END PIN	125
NSD412LTC-OE-PQ5	4 1/2 LTC OPEN END PIN	110
NSD412L/S-OE-BQ5	4 1/2 L/S OPEN END BOX	140
NSD412-2STC-CE-PQ5	4 1/2 2 IN. STC SKIRT CLOSED END PIN	175
NSD412STC-CE-PQ5	4 1/2 STC CLOSED END PIN	125
NSD412LTC-CE-PQ5	4 1/2 LTC CLOSED END PIN	110
NSD412L/S-CE-BQ5	4 1/2 L/S CLOSED END BOX	140
NSD412BTC-CE-BQ5	4 1/2 BTC CLOSED END BOX	120
NSD412BTC-CE-PQ5	4 1/2 BTC CLOSED END PIN	60
NSD512STC-OE-PQ5	5 1/2 STC OPEN END PIN	60
NSD512LTC-OE-PQ5	5 1/2 LTC OPEN END PIN	60
NSD512L/S-OE-BQ5	5 1/2 L/S OPEN END BOX	84
NSD512STC-CE-PQ5	5 1/2 STC CLOSED END PIN	60
NSD512LTC-CE-PQ5	5 1/2 LTC CLOSED END PIN	60
NSD512L/S-CE-BQ5	5 1/2 L/S CLOSED END BOX	84
NSD700STC-OE-PQ5	7 STC OPEN END PIN	32
NSD700LTC-OE-PQ5	7 LTC OPEN END PIN	32
NSD700L/S-OE-BQ5	7 L/S OPEN END BOX	45
NSD700STC-CE-PQ5	7 STC CLOSED END PIN	32
NSD700LTC-CE-PQ5	7 LTC CLOSED END PIN	32
NSD700L/S-CE-BQ5	7 L/S CLOSED END BOX	45
NSD758LTC-OE-PQ5	7 5/8 LTC OPEN END PIN	30
NSD758LTC-CE-PQ5	7 5/8 LTC CLOSED END PIN	30
NSD758L/S-OE-BQ5	7 5/8 L/S OPEN END BOX	30
NSD758L/S-CE-BQ5	7 5/8 L/S CLOSED END BOX	30
NSD858L/S-OE-BQ5	8 5/8 L/S OPEN END BOX	28
NSD858L/S-CE-BQ5	8 5/8 L/S CLOSED END BOX	28
NSD858L/S-OE-PQ5	8 5/8 LTC/STC OPEN END PIN	20
NSD858L/S-CE-PQ5	8 5/8 LTC/STC CLOSED END PIN	20
NSD858STC-CE-PQ5	8 5/8 STC CLOSED END PIN	28
NSD958L/S-OE-PQ5	9 5/8 LTC/STC OPEN END PIN	16
NSD958STC-OE-BQ5	9 5/8 STC OPEN END BOX	24
NSD958L/S-CE-PQ5	9 5/8 LTC/STC CLOSED END PIN	16
NSD958STC-CE-BQ5	9 5/8 STC CLOSED END BOX	24
NSD958LTC-CE-BQ5	9 5/8 LTC CLOSED END BOX	24
NSD1034STC-OE-PQ5	10 3/4 STC OPEN END PIN	14
NSD1034STC-CE-PQ5	10 3/4 STC CLOSED END PIN	14
NSD1034L/S-CE-BQ5	10 3/4 L/S CLOSED END BOX	14

## NSD Water Well Casing - Color Noted



Caplugs No.	Description	Carton Quantity
NSD412WW-OE-PQ5	4 1/2 WATER WELL OPEN PIN BLACK	175
NSD412WW-OE-BQ5	4 1/2 WATER WELL OPEN BOX BLACK	175
NSD5916WW-OE-PQ5	5 9/16 WATER WELL OPEN PIN BLACK	108
NSD5916WW-OE-BQ5	5 9/16 WATER WELL OPEN BOX BLACK	160
NSD658WW-OE-BQ5	6 5/8 WATER WELL OPEN BOX BLACK	78
NSD658WW-OE-PQ2	6 5/8 WATER WELL OPEN PIN BLUE	78
NSD858WW-OE-BQ5	8 5/8 WATER WELL OPEN BOX BLACK	40
NSD858WW-OE-PQ2	8 5/8 WATER WELL OPEN PIN BLUE	40
NSD1034WW-OE-BQ5	10 3/4 WATER WELL OPEN PIN BLACK	14
NSD1034WW-OE-PQ2	10 3/4 WATER WELL OPEN PIN BLUE	14



# TUBING AND CASING PROTECTORS - STANDARD DUTY

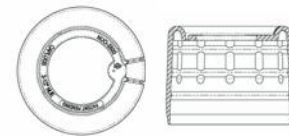


## GRIP IT & RIP IT™ Design

### Standard-Duty External Upset End Tubing Protection UEO Series

Protects exposed tubing pin ends. Easily installed and removed with a non-threaded, push-on design and a tear-ring. Made with recyclable polyethylene.

Material: Low-Density Polyethylene Color: Black



Caplugs No.	To Fit NUE Tubing (In)	Description	API Class	Carton Quantity
UEO-2375	2-3/8	Pin End Open	Standard Duty	100
UEO-2875	2-7/8	Pin End Open	Standard Duty	100
UEO-3500	3-1/2	Pin End Open	Standard Duty	100
UEO-4500	4-1/2	Pin End Open	Standard Duty	80

Caplugs' new patent-pending, Standard-Duty Well Casing Thread Protectors are designed to protect the exposed well casing pin ends while in transit or storage. The unique and innovative design allows the protectors to be installed as a push-on (non-threaded) cap, with a tear ring and rail removal feature, and adheres to API standard-duty requirements.



Material: Recyclable polyethylene Color: Black

### Patent-pending design - there's no other like it in the industry.

- Easy installation - does not need to be threaded on; can be seated using a rubber mallet. Tapered end allows casing to slide up and over each other when loading or unloading from a stack.
- Easy to remove at the drill site. No tools required for removal. Simply pull the tear ring and remove the protector.
- Designed and tested for impact resistance, temperature extremes, salt spray corrosion and vibration.
- Range of sizes: 4-1/2" thru 13-3/8"

## GRIP IT & RIP IT™ Design

### Standard-Duty Buttress Well Casing BUT Series

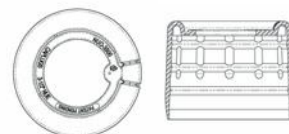
Caplugs No.	Description	To Fit	Carton Quantity	Disk Insert to Make Closed End
BUT-4500-3637	Pin End Open	4-1/2" Buttress Thread Standard Duty	96	G-CUS-BUT-412
BUT-5500-3825	Pin End Open	5-1/2" Buttress Thread Standard Duty	54	G-CUS-BUT-512
BUT-7000-4200	Pin End Open	7" Buttress Thread Standard Duty	35	G-CUS-BUT-700
BUT-9625-4512	Pin End Open	9-5/8" Buttress Thread Standard Duty	20	G-CUS-BUT-958
BUT-11750-4512	Pin End Open	11-3/4" Buttress Thread Standard Duty	10	G-CUS-BUT-1134
BUT-13375-4512	Pin End Open	13-3/8" Buttress Thread Standard Duty	10	G-CUS-BUT-1338

## GRIP IT & RIP IT™ Design

### Standard-Duty Non-Upset End Tubing Protection NUO Series

Protects exposed tubing pin ends. Easily installed and removed with a non-threaded, push-on design and a tear-ring. Made with recyclable polyethylene.

Material: Low-Density Polyethylene Color: Black

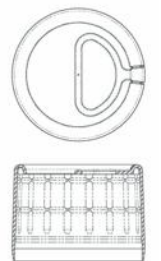


Caplugs No.	To Fit NUE Tubing (In)	Description	API Class	Carton Quantity
NUO-2375	2-3/8	Pin End Open	Standard Duty	100
NUO-2875	2-7/8	Pin End Open	Standard Duty	100
NUO-3500	3-1/2	Pin End Open	Standard Duty	100

## GRIP IT & RIP IT™ Design

### Standard-Duty Long Thread Well Casing CLT Series

Caplugs No.	To Fit Casing (In)	Thread Type	Description	API Class	Carton Quantity
CLT-4500-3000	4-1/2	LTC Long Thread	Pin End Open	Standard Duty	40
CLT-5000-3375	5	LTC Long Thread	Pin End Open	Standard Duty	40
CLT-5500-3500	5-1/2	LTC Long Thread	Pin End Open	Standard Duty	65
CLT-6625-3875	6-5/8	LTC Long Thread	Pin End Open	Standard Duty	35
CLT-7000-4000	7	LTC Long Thread	Pin End Open	Standard Duty	35
CLT-7625-4125	7-5/8	LTC Long Thread	Pin End Open	Standard Duty	25
CLT-9625-4750	9-5/8	LTC Long Thread	Pin End Open	Standard Duty	20

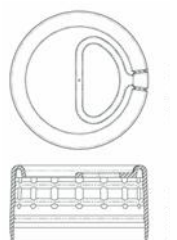


Save money in the field with our **quick release** tear-off protector.

## GRIP IT & RIP IT™ Design

### Standard-Duty Short Thread Well Casing CST Series

Caplugs No.	To Fit Casing (In)	Thread Type	Description	API Class	Carton Quantity
CST-4500-2000	4-1/2	STC Short Thread	Pin End Open	Standard Duty	50
CST-4500-2625	4-1/2	STC Short Thread	Pin End Open	Standard Duty	50
CST-5000-2500	5	STC Short Thread	Pin End Open	Standard Duty	40
CST-5000-2750	5	STC Short Thread	Pin End Open	Standard Duty	35
CST-5500-2875	5-1/2	STC Short Thread	Pin End Open	Standard Duty	30
CST-6625-3125	6-5/8	STC Short Thread	Pin End Open	Standard Duty	42
CST-7000-2375	7	STC Short Thread	Pin End Open	Standard Duty	60
CST-7000-3125	7	STC Short Thread	Pin End Open	Standard Duty	42
CST-7625-3250	7-5/8	STC Short Thread	Pin End Open	Standard Duty	35
CST-8625-3000	8-5/8	STC Short Thread	Pin End Open	Standard Duty	32
CST-9625-3375	9-5/8	STC Short Thread	Pin End Open	Standard Duty	24
CST-10750-3500	10-3/4	STC Short Thread	Pin End Open	Standard Duty	16



# TUBING AND CASING PROTECTORS - HEAVY DUTY



## Connecting Quality to Value

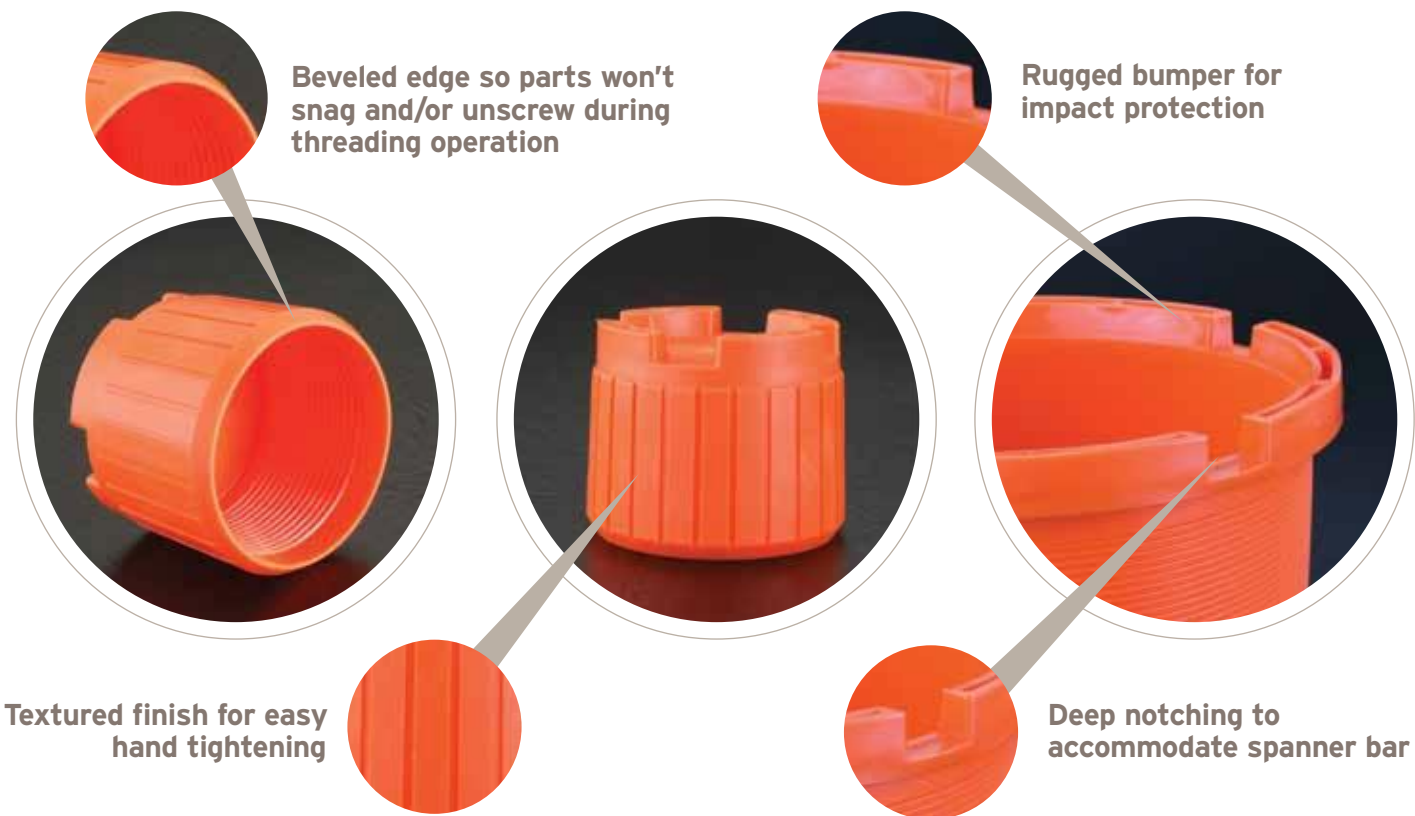
### New Heavy-Duty Thread Protectors NMD Series

Engineered for ease of use and durability, our Heavy-Duty Thread Protectors ensure threads are secure.



User-friendly, Heavy-Duty Thread Protectors are:

- Available in American Petroleum Institute 8-round and buttress threads
- Effective for short- and long-term storage
- ISO-certified consistent quality
- Third-party tested against corrosion, vibration, axial impact, angular impact and stripping



### NMD Tubing Sizes\*

Caplugs No.	Description
NMD-238-EUE-P	2 3/8 EUE PIN HEAVY DUTY
NMD-238-EUE-B	2 3/8 EUE BOX HEAVY DUTY
NMD-278-EUE-P	2 7/8 EUE PIN HEAVY DUTY
NMD-278-EUE-B	2 7/8 EUE BOX HEAVY DUTY
NMD-312-EUE-P	3 1/2 EUE PIN HEAVY DUTY
NMD-312-EUE-B	3 1/2 EUE BOX HEAVY DUTY

### NMD Casing Sizes\*

Caplugs No.	Description
NMD-412-BUT-P	4 1/2 BUT PIN HEAVY DUTY
NMD-412-BUT-B	4 1/2 BUT BOX HEAVY DUTY
NMD-412-LTC-P	4 1/2 LTC PIN HEAVY DUTY
NMD-412-LTC-B	4 1/2 LTC BOX HEAVY DUTY
NMD-512-BUT-P	5 1/2 BUT PIN HEAVY DUTY
NMD-512-BUT-B	5 1/2 BUT BOX HEAVY DUTY
NMD-512-LTC-P	5 1/2 LTC PIN HEAVY DUTY
NMD-512-LTC-B	5 1/2 LTC BOX HEAVY DUTY
NMD-700-BUT-P	7 BUT PIN HEAVY DUTY
NMD-700-BUT-B	7 BUT BOX HEAVY DUTY
NMD-700-LTC-P	7 LTC PIN HEAVY DUTY
NMD-700-LTC-B	7 LTC BOX HEAVY DUTY
NMD-858-BUT-P	8 5/8 BUT PIN HEAVY DUTY
NMD-858-BUT-B	8 5/8 BUT BOX HEAVY DUTY
NMD-858-LTC-P	8 5/8 LTC PIN HEAVY DUTY
NMD-858-LTC-B	8 5/8 LTC BOX HEAVY DUTY
NMD-958-BUT-P	9 5/8 BUT PIN HEAVY DUTY
NMD-958-BUT-B	9 5/8 BUT BOX HEAVY DUTY
NMD-958-LTC-P	9 5/8 LTC PIN HEAVY DUTY
NMD-958-LTC-B	9 5/8 LTC BOX HEAVY DUTY
NMD-1338-BUT-P	13 3/8 BUT PIN HEAVY DUTY
NMD-1338-BUT-B	13 3/8 BUT BOX HEAVY DUTY
NMD-1338-STC-P	13 3/8 STC PIN HEAVY DUTY
NMD-1338-STC-B	13 3/8 STC BOX HEAVY DUTY

Caplugs Heavy-Duty Protectors provide just the right level of rugged protection at the right value. Tested to meet the API 5CT Annex I requirements for corrosion, vibration and thread stripping.

\*Standard color is orange. Multiple colors available. Please contact sales representative for color availability.

# TUBING AND CASING PROTECTORS - HEAVY DUTY

## Independently Tested to Ensure Quality & Durability

Our products have been analyzed by an independent third-party testing lab, Plastics Services Network.\*

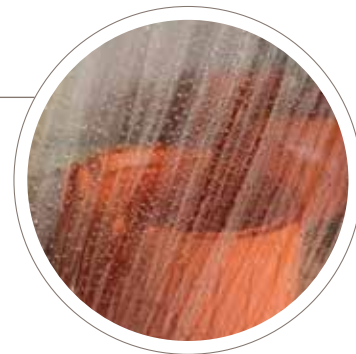
Our Heavy-Duty Thread Protectors meet and exceed API 5CT Annex I specifications for **corrosion, vibration and thread stripping**. Additional **impact testing** was also completed to ensure durability and optimal product performance.

### CORROSION PREVENTION TEST

The integrity of our thread protectors remains intact even in the harshest environments, securing your threads from corrosion and damage.

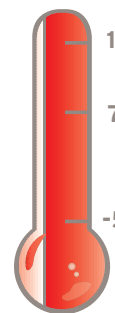
In the Corrosion Prevention study, products were tested with a continuous salt water spray for 1,000 hours to assess the level of protection provided by the thread protector.

Part	Hours	Pass/Fail
Pin/Box	100	Pass**
Pin/Box	500	Pass**
Pin/Box	1000	Pass**



### VIBRATION TEST

The Vibration Test was performed to ensure that box and pin parts are self-locking and able to withstand the vibrations encountered during transportation; tested at 1,000,000 cycles.



Both the box and pin remained secure on the well casing and tubing in a variety of harsh temperatures ranging from -50°F to 150°F. Testing performed at -50°F, 70°F and 150°F at 921 rev/min with vertical displacement of 0.33 inches for one million cycles per test.

\* Plastics Services Network is an independent testing facility in Erie, PA, founded in 1999. The primary focus of PSN is to provide professional services to the plastics industry, which includes part and mold design, material selection, testing, prototyping and processing for any and all plastics-related needs. [www.psnlabs.com](http://www.psnlabs.com) 814.464.0791  
 \*\* Per the API specs, protectors were deemed to have passed the test if there was no slight or corrosion damage in the seal and the perfect thread area.



### THREAD STRIP TEST

This test ensured that our protectors will not be stripped from the threads if impacted by another. The protectors were able to withstand a force of  $F_{ax}$  calculated from the following equation.

$F_{ax} = 60 \times w$   
 $F_{ax}$  is the force, in pounds force;  
 $w$  is the linear mass of the pipe, in pounds

Thread Strip				
Part	-50°F	70°F	150°F	Result
Pin	x	x	x	x

### ANGULAR & AXIAL IMPACT TEST

This test was performed at high and low temperatures under a range of impact energy (ft lbs) to ensure that thread protectors are capable of sustaining impact loads without damage to the machined surfaces of the pipe or threads in a variety of environments. Extreme cold temperatures that bring a higher risk of failure were tested with higher-impact energy to ensure performance in extreme weather.

Pin end impact results 9 5/8 - High Temp. (150°F)		
Axial		
Impact Energy (ft lbs)	Initial Torque (in lbs)	Comments
350	807	Passed
Angle		
450	788	Passed
Pin end impact results 9 5/8 - Low Temp. (-50°F)		
Axial		
Impact Energy (ft lbs)	Initial Torque (in lbs)	Comments
600	729	Passed
Angle		
550	900	Passed

Box end impact results 9 5/8 - High Temp. (150°F)		
Axial		
Impact Energy (ft lbs)	Initial Torque (in lbs)	Comments
250	935	Passed
Box end impact results 9 5/8 - Low Temp. (-50°F)		
Axial		
Impact Energy (ft lbs)	Initial Torque (in lbs)	Comments
200	911	Passed

## PREMIUM TUBING AND CASING PROTECTORS



Tri-Star has a broad range of premium products, including American Petroleum Institute and various thread configurations. We carry protectors ranging from 2 3/8" tubing up to 10 3/4" casing sizes, available new or reconditioned to fit your budget. All protectors are in stock and ready for immediate shipment.

Contact our Tri-Star Sales Team at **281.399.2600** or via email at [sales@tristarprotectors.com](mailto:sales@tristarprotectors.com) for assistance. Let us know what thread type you're looking for, and we'll be happy to help you order what you need.





# DRILL PIPE PROTECTION



## Drill Pipe Protectors SA Series

These heavy-duty protectors ensure thread protection for drill pipe connections. Available in most common tool joint connections including high torque. Effective for both short- and long-term storage to keep threads free from damage.

Material: High-Density Polyethylene Color: Black



Caplugs No.	Description
SA-238-IF-B	2 3/8" IF BOX HEAVY HDPE
SA-238-IF-P	2 3/8" IF PIN HEAVY HDPE
SA-238-REG-B	2 3/8" REG BOX HEAVY HDPE
SA-238-REG-P	2 3/8" REG PIN HEAVY HDPE
SA-278-IF-B	2 7/8" IF BOX HEAVY HDPE
SA-278-IF-P	2 7/8" IF PIN HEAVY HDPE
SA-278-REG-B	2 7/8" REG BOX HEAVY HDPE
SA-278-REG-P	2 7/8" REG PIN HEAVY HDPE
SA-312-IF-B	3 1/2" IF BOX HEAVY HDPE
SA-312-IF-P	3 1/2" IF PIN HEAVY HDPE
SA-312-REG-B	3 1/2" REG BOX HEAVY HDPE
SA-312-REG-P	3 1/2" REG PIN HEAVY HDPE
SA-312-REG-B-LIFT	3 1/2" REG BOX LIFTING BELL
SA-312-REG-P-LIFT	3 1/2" REG PIN LIFTING BELL
SA-400-FH-B	4" FH BOX HEAVY HDPE
SA-400-FH-P	4" FH PIN HEAVY HDPE
SA-400-IF-B	4" IF BOX HEAVY HDPE
SA-400-IF-P	4" IF PIN HEAVY HDPE
SA-400-XT39-B	4" XT39 BOX HEAVY HDPE
SA-400-XT39-P	4" XT39 PIN HEAVY HDPE
SA-412-IF-B	4 1/2" IF BOX HEAVY HDPE
SA-412-IF-P	4 1/2" IF PIN HEAVY HDPE
SA-412-REG-B	4 1/2" REG BOX HEAVY HDPE

Caplugs No.	Description
SA-412-REG-P	4 1/2" REG PIN HEAVY HDPE
SA-412-REG-B-LIFT	4 1/2" REG BOX LIFTING BELL
SA-412-REG-P-LIFT	4 1/2" REG PIN LIFTING BELL
SA-512-FH-B	5 1/2" FH BOX HEAVY HDPE
SA-512-FH-P	5 1/2" FH PIN HEAVY HDPE
SA-658-REG-B	6 5/8" REG BOX HEAVY HDPE
SA-658-REG-P	6 5/8" REG PIN HEAVY HDPE
SA-658-REG-LH-B	6 5/8" REG LH BOX HEAVY HDPE
SA-658-REG-LH-P	6 5/8" REG LH PIN HEAVY HDPE
SA-HT38-B	HT38 BOX HEAVY HDPE
SA-HT38-P	HT38 PIN HEAVY HDPE
SA-HT40-B	HT40 BOX HEAVY HDPE
SA-HT40-P	HT40 PIN HEAVY HDPE
SA-HT55-B	HT55 BOX HEAVY HDPE
SA-HT55-P	HT55 PIN HEAVY HDPE
SA-XT38-B	XT38 BOX HEAVY HDPE
SA-XT38-P	XT38 PIN HEAVY HDPE
SA-XT40-B	XT40 BOX HEAVY HDPE
SA-XT40-P	XT40 PIN HEAVY HDPE
SA-XT57-B	XT57 BOX HEAVY HDPE
SA-XT57-P	XT57 PIN HEAVY HDPE
SA-XTM38-B	XTM38 BOX HEAVY HDPE
SA-XTM38-P	XTM38 PIN HEAVY HDPE

# VINYL ROLLER PIN COVERS



## Vinyl Roller Pin Covers VRPC Series

Caplugs' vinyl roller pin covers (VRPC Series) protect threads on oil and gas drill bits during shipping and storage, and are made with high-durometer vinyl. The design provides an interference fit and is angled to match the conical drill bit shape for full coverage protection.

High-durometer vinyl provides extra endwall protection, keeps threads free of contaminants and provides economical protection.

Material: High-Durometer Vinyl Color: Black



Caplugs No.	Roller Cone Pin Size	Carton Quantity
VRPC-2375	2-3/8" API	250
VRPC-2375-PAC	2-3/8" PAC	200
VRPC-2875	2-7/8" API	100
VRPC-3500	3-1/2" API	100
VRPC-4500	4-1/2" API	50
VRPC-6625	6-5/8" API	50
VRPC-7625	7-5/8" API	25
VRPC-8625	8-5/8" API	20

# SUCKER ROD PROTECTION



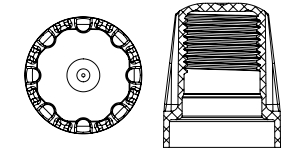
## Polished Sucker-Rod Protectors PSR Series

Made for high-grade, polished stainless steel, sucker-rod protectors provide excellent impact protection. Screw on threaded ends for maximum retention. Easily removed with socket tools or wrenches.

Material: High-Density Polyethylene Color: Color coded by size



Caplugs No.	To Cap Rod Size (In)	Color	Carton Quantity	Mini Pak Quantity
PSR-0625	5/8	Red	600	120
PSR-0750	3/4	Yellow	400	80
PSR-0875	7/8	Orange	500	100
PSR-1000	1	Blue	300	60



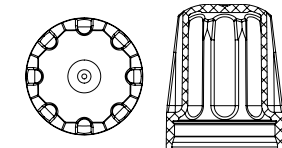
## Sucker-Rod Protectors SSR Series

Feature a non-threaded design for steel sucker rods. Protect threaded ends with excellent impact protection. Easily removed with socket tools or wrenches.

Material: High-Density Polyethylene Color: Black



Caplugs No.	To Cap Rod Size (In)	Carton Quantity	Mini Pak Quantity
SSR-0625	5/8	600	120
SSR-0750	3/4	400	80
SSR-0875	7/8	500	100
SSR-1000	1	300	60
SSR-1125	1-1/8	200	40



Note: SR Series is still available. Please visit [caplugs.com/pipeandflange](http://caplugs.com/pipeandflange) to view our full line.

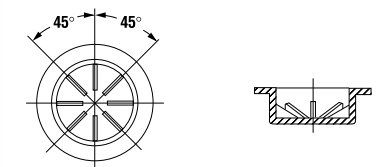
## Sucker-Rod Plugs FPN Series

These heavy-duty plugs protect sucker-rod couplings, but have a versatile design that is ideal for a wide range of applications where a greater degree of protection is necessary.

Material: Low-Density Polyethylene Color: Black



Caplugs No.	Dimensions	Packaging	
	To Cap Rod Size (In)	Carton Quantity	Mini Pak Quantity
FPN 5	5/8	3500	700
FPN 6	3/4	2500	500
FPN 7	7/8	2000	400
FPN 8	1	1500	300



# OCTG ACCESSORIES

## Pipe Chocks Pipe Protection NPC Series

Pipe Chocks are made to hold heavy pipes in place and to stop them from shifting during storage and/or transportation. The bright-orange chocks ensure high visibility and withstand weather better than their wooden counterparts.



Standard Color: Orange

Caplugs No.	Description	Carton Quantity
AM-PCK/WO NAILQ1	4 1/4" CHOCK NPC-4-1/4, NO NAILS	75
AM-PCK/W NAILQ1	4 1/4" CHOCK NPC-4-1/4 W/NAILS	75
NPC-8Q1	8" LARGE CHOCK NPC-8 W/NAILS	40
NPC-8Q1/WO NAIL	8" LARGE CHOCK NPC-8, NO NAILS	40

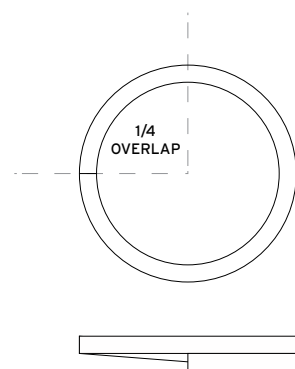
## Bumper Ring Pipe Protection Bumper Ring Series

Bumper Rings improve pipe protection during the handling, transportation and/or storage to avoid contact between the outside surface of the pipes, especially for high-alloy or chromium-grade pipes. Bumper Rings prevent damage or corrosion caused by the pipe surface coming into contact with each other. Bumper Rings are produced in standard sizes ranging from 2 3/8" to 16", corresponding to the pipe diameters.



Standard Color: Black

Caplugs No.	Diameter	Wrap	Stand-off Height (In)
AM238BRQ1	2 3/8" RING	1 1/4 WRAP	1/2"
AM278BRQ1	2 7/8" RING	1 1/4 WRAP	1/2"
AM312BRQ1	3 1/2" RING	1 1/4 WRAP	1/2"
AM412BRQ1	4 1/2" RING	1/2" WRAP	1/2"
AM512BRQ1	5 1/2" RING	1 1/2 WRAP	5/8"
AM700BRQ1	7" RING	1 1/2 WRAP	5/8"
AM758BRQ1	7 5/8" RING	1 1/4 WRAP	3/4"
AM858BRQ1	8 5/8" RING	1 1/4 WRAP	3/4"
AM958BRQ1	9 5/8" RING	1 1/4 WRAP	7/8"
AM1034BRQ1	10 3/4" RING	1 1/4 WRAP	7/8"
AM1134BRQ1	11 3/4" RING	1 1/4 WRAP	1"
AM1178BRQ1	11 7/8" RING	1 1/4 WRAP	1"
AM1338BRQ1	13 3/8" RING	1 1/4 WRAP	1"
AM1400BRQ1	14" RING	1 1/8 WRAP	1 1/2"
AM1400BRHVYQ1	14" RING	1 1/4 WRAP	1 5/8"
AM1600BRQ1	16" RING	1 1/4 WRAP	1 1/8"
AM1600BRHVYQ1	16" RING	1 1/8 WRAP	1 5/8"



# HAMMER UNION

## Hammer Union Protection HU, FHU and VC Series

Covers machined threads and sealing surfaces of hammer union joint connections. Includes a unique ergonomic handle for easy use. Designed with high-durometer vinyl for durability and impact resistance at a lower cost. The FHU and VC Series are protective caps for the female subcomponent.



Material: High-Durometer Vinyl Color: Color coded by working pressure

Our hammer union protection is **30% less expensive** than current comparable products.



HU Series



FHU Series



VC Series

Caplugs No.	Figure	Working Pressure	To Fit Nominal Pipe Size (In)	Color	HU Carton Quantity *	FHU Caplugs No. Threaded For Female Sub	FHU Carton Quantity	VC Caplugs No. Non-Threaded For Female Sub **	VC Carton Quantity
HU-100-2	100	1000	2	Yellow	50			VC-3500-32	100
HU-100-2.5	100	1000	2-1/2	Yellow	50	FHU-100-2.5	50	VC-4187-32	100
HU-100-3	100	1000	3	Yellow	50	FHU-100-3	50	VC-4875-32	100
HU-100-4	100	1000	4	Yellow	50			VC-6125-32	50
HU-100-5	100	1000	5	Yellow	50			VC-7250-32	40
HU-100-6	100	1000	6	Yellow	50			VC-8750-32	30
HU-206-2	200/206/207	2000	2	Yellow	50	FHU-206-2	100	VC-3375-28	200
HU-206-3	200/206/207	2000	3	Yellow	50	FHU-206-3	50	VC-4813-32	100
HU-206-4	200/206/207	2000	4	Yellow	50			VC-6125-32	50
HU-206-6	200/206/207	2000	6	Yellow	50			VC-8750-32	30
HU-206-8	200/206/207	2000	8	Yellow	25	FHU-206-8 w/tab	10	n/a	n/a
HU-400-2	400	4000	2	Red	100	FHU-400-2	50	VC-3750-32	150
HU-400-3	400	4000	3	Red	50	FHU-400-3	50	VC-5375-32	100
HU-602-2	602	6000	2	Grey	100			VC-3500-32	100
HU-602-3	602	6000	3	Grey	50			VC-5187-26	100
HU-602-4	602	6000	4	Grey	50			VC-6000-28	90
HU-1002-4L	1002	10000	4 (Long)	Black	50	FHU-1002-4	50	VC-6000-28	90
HU-1002-4S	1002	10000	4 (Short)	Black	50	FHU-1002-4	50	VC-6000-28	90
HU-1002-5	1002	10000	5	Black	50			VC-7375-32	50
HU-1002-6	1002	10000	6	Black	50			VC-8750-32	30
HU-1003-3	1003	10000	3	Green	50			VC-5625-32	50
HU-1003-4/5	1003	10000	4-5	Green	50			VC-6875-32	50
HU-1502-1	1502	15000	1	Red	100			VC-2750-28	200
HU-1502-1 1/2	1502	15000	1-1/2	Red	100			VC-3500-32	100
HU-1502-2	1502	15000	2	Red	50	FHU-1502-2	50	VC-4000-32	100
HU-1502-3	1502	15000	3	Red	50	FHU-1502-3	50	VC-5187-26	100
HU-1502-3HD	1502	15000	3 (Heavy Duty)	Red	25	FHU-1502-3HD	25	VC-5625-32	100
HU-1502-3HDS	1502	15000	3 (Heavy Duty-SHORT)	Red	25	FHU-1502-3HD	25	VC-5625-32	100
HU-1502-4	1502	15000	4	Red	50	FHU-1502-4	50	VC-6000-28	90
HU-1502-5	1502	15000	5	Red	50	FHU-1502-5	25	VC-7500-32	50
HU-1502-6	1502	15000	6	Red	25			VC-8750-32	30

\* Only sold in full-carton quantities.

\*\* Recommended – Must sample VC style for length fit. We can accommodate different lengths.

Note: More new sizes are being added. Call 1-888-CAPPLUGS or check www.capplugs.com for the latest information. If you don't find the size you need in our standard offering, we'll build it for you.



AFTER

COMPREHENSIVE  
7-POINT  
INSPECTION

# RECONDITIONED THREAD PROTECTION

BEFORE

## AFFORDABLE AND EFFECTIVE PROTECTION

Tri-Star is the only supplier that offers both new and reconditioned thread protectors. For the times when you need dependable thread protection but the application doesn't require a new protector, we offer reliable reconditioned thread protectors at a more economical price.

- Thousands of options
- American Petroleum Institute-compliant thread protectors
- In sizes and thread types between 2 3/8" and 20" in plastic or composite

### Tested to Ensure Quality, Durability and Performance

Each of our reconditioned products goes through a comprehensive 7-point inspection as follows:

1. Incoming Inspection
2. Sorting Inspection
3. Field Grade Inspection
4. Pre-Wash Inspection
5. Post-Wash Inspection
6. Quality Control Inspection
7. Packaging Inspection

When you want to save money without compromising quality, count on Tri-Star, the only comprehensive, ISO 9001-certified\* supplier of reconditioned thread protectors in the industry. With more than 25 years of experience, Tri-Star is known for superior customer service and expertise.

ISO 9001  
ISO/TS 16949  
ISO 14001  
ISO 13485  
REGISTERED

Take advantage of cost savings and same-day shipping on our wide selection of reconditioned protectors. Call us with your sizes, and we'll tell you what's in stock.

[www.tristarprotectors.com](http://www.tristarprotectors.com) // [sales@tristarprotectors.com](mailto:sales@tristarprotectors.com) // 281.399.2600

#### \*Quality Certifications

- Caplugs' stringent quality management systems ensure that the necessary process controls exist to provide our customers with consistent, quality products.
- Our quality system in our New York and Pennsylvania facilities is certified to ISO 9001 & ISO/TS 16949
  - Our quality system in our California and Texas facilities is certified to ISO 9001
  - Our quality system in Shanghai and Hangzhou, China is certified to ISO 9001 & ISO/TS 16949
  - Buffalo, NY, ISO 13485 certification applies to all clean-room medical products
  - Our environmental system in our New York, Pennsylvania, California, and Hangzhou facilities is certified to ISO 14001





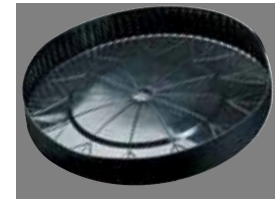
PIPE, VALVE,  
FLANGE  
& FITTING  
PROTECTION

## PROTECTING YOUR BOTTOM LINE

**Damaged pipe, valve and flange components can cause major problems. Don't take chances – use simple, economical product protection up front to save time and money.**

For more than 65 years, Caplugs has brought innovative plastic and rubber molded solutions to solve your toughest challenges. Through extensive R&D, and invaluable time spent directly in the field working with you, our engineers have developed the products you need to get the job done easily and safely.

Our line of plastic protection covers a wide variety of pipes, valves, flanges and other fabricated components during shipping and storage. We are ISO 9001, ISO 14001, ISO/TS 16949 and ISO 13485 certified, so you know we're right for the job. With six molding processes available and custom capabilities, we protect what matters most.



Full line of pipe caps:

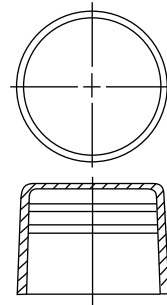
- Available in many styles and sizes
- Protect against damage, dust and moisture
- Offer quality coverage at an affordable price
- Are easy to install and remove
- Are always in stock and ready to ship same day
- Can be used during transport and storage
- Economical protection that ensures your expensive components are protected

# PIPE CAPS

## Plastic Pipe Cap CE Series

Durable caps that protect against damage and debris. CE-309 (1-1/4" NPT) through CE-326 (12" NPT) feature an NPT taper fit. All others have straight walls, for line pipe application.

Material: Low-Density Polyethylene Color: Various

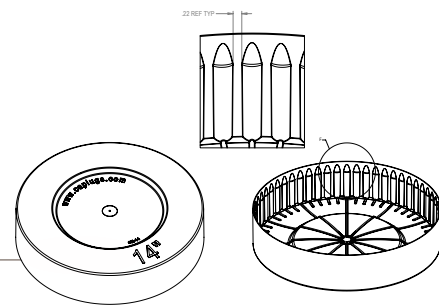


Features an internal rib design for self-venting and added impact protection.

Caplugs No.	Color	Dimension - To Fit	Carton Quantity	Mini Pak Quantity
CE-309	Black	1/4 NPT	7000	1400
CE-310	Black	3/8 NPT	4000	800
CE-311	Black	1/2 NPT	5000	1000
CE-312	Black	3/4 NPT	4000	800
CE-313	Black	1 NPT	4500	900
CE-314	Black	1-1/4 NPT	2500	500
CE-315	Black	1-1/2 NPT	2000	400
CE-316	Black	2 NPT	1200	240
CE-317	Black	2-1/2 NPT	500	100
CE-318	Black	3 NPT	400	80
CE-319	Black	3-1/2 NPT	300	60
CE-320	Black	4 NPT	225	45
CE-321	Black	5 NPT	120	24
CE-322	Black	6 NPT	80	16
CE-324	Black	8 NPT	80	16
CE-325	Black	10 NPT	40	8
CE-326	Black	12 NPT	25	5
<b>CE-14</b>	Black	14 NPS	20	4
<b>CE-16</b>	Black	16 NPS	16	4
<b>CE-18</b>	Black	18 NPS	16	4
<b>CE-20</b>	Black	20 NPS	14	4
CE-331	Yellow	22 NPS	22	2
<b>CE-24</b>	Black	24 NPS	12	2
CE-333	Black	26 NPS	10	2
CE-334	Black	28 NPS	10	2
<b>CE-30</b>	Black	30 NPS	10	2
CE-336	Black	32 NPS	10	2
<b>CE-36</b>	Black	36 NPS	10	2
CE-338	Black	40 NPS	8	2
<b>CE-42</b>	Black	42 NPS	10	2
CE-342	Black	44 NPS	5	2
CE-344	Black	48 NPS	6	1
CE-346	Black	52 NPS	6	1
CE-348	Black	56 NPS	6	1
CE-350	Black	60 NPS	6	1
CE-352	Black	64 NPS	4	1

Available in: 14", 16", 18", 20", 24", 30", 36" and 42".

A specially designed lead-in area helps orient the cap and make it easier to install. Flexible side walls developed by a patent-pending design incorporate vertical ribs in the side walls, allowing the cap to stretch out for a more forgiving installation, using just a fraction of the force needed to install most caps in the market today.



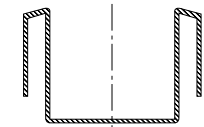
## Closed-End Recessed Caps EPN-240 Series

Closed-end pipe caps that are recessed to accommodate crane hooks for ease of mobility, loading and unloading.

Material: Linear Low-Density Polyethylene Color: Black



Caplugs No.	Nominal Pipe Size		Maximum Wall Thickness		Packaging	
	In	In	mm	Carton Quantity	Mini Pak Quantity	
EPN-240-4	4	.551	14	70	n/a	
EPN-240-6	6	.630	16	30	n/a	
EPN-240-8	8	.551	14	25	n/a	
EPN-240-10	10	.591	15	20	n/a	
EPN-240-10-A	10	.906	23	13	n/a	
EPN-240-12	12	.591	15	9	n/a	
EPN-240-14	14	.591	15	12	n/a	
EPN-240-16	16	.630	16	12	n/a	
EPN-240-18	18	.630	16	10	n/a	
EPN-240-20	20	.630	16	10	n/a	
EPN-240-24	24	.866	22	6	n/a	
EPN-240-28	28	.866	22	6	n/a	
EPN-240-30	30	.866	22	10	n/a	
EPN-240-32	32	.906	23	10	n/a	
EPN-240-36	36	.906	23	10	n/a	
EPN-240-40	40	1.063	27	6	n/a	



## Open-End Beveled-Edge Protectors EPN-250 Series

Guard beveled-edge pipes for hookable lifting. Durable and easy to install; remain securely on pipe until removal.

Material: Linear Low-Density Polyethylene Color: Black



Caplugs No.	Nominal Pipe Size		Maximum Wall Thickness		Packaging
	In	In	mm	Carton Quantity	
EPN-250-8	8	.551	14	35	
EPN-250-10	10	.591	15	20	
EPN-250-12	12	.591	15	9	
EPN-250-12-A	12	1.024	26	9	
EPN-250-14	14	.591	15	12	
EPN-250-16	16	.630	16	12	
EPN-250-18	18	.630	16	10	
EPN-250-20	20	.630	16	10	
EPN-250-24	24	.866	22	6	





# PIPE CAPS

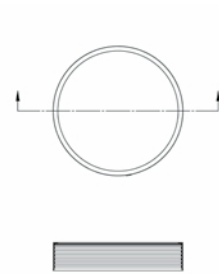
## Fabricated Pipe Caps FPC Series

Manufactured in one week to fit any size up to 60" (including fractional inches). High-density polyethylene top with a flexible, low-density polyethylene skirt for simple attachment. Economical alternative to a cumbersome, two-piece cap.

**Material:** High-Density Polyethylene (Disk), Low-Density Polyethylene (Skirt) **Color:** Black



Caplugs No.	Pipe Size	Carton Quantity
	In	
FPC-32	32	5
FPC-34	34	5
FPC-36	36	4
FPC-38	38	4
FPC-40	40	4
FPC-42	42	4
FPC-44	44	4
FPC-48	48	4
FPC-52	52	2
FPC-56	56	2
FPC-60	60	2



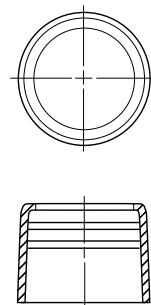
## Open-End Thread Protectors OE Series Traditional Design

Shield threaded pipes and conduits during shipping, storage and transit. Each protector includes a locking bead to fit snugly.

**Material:** Low-Density Polyethylene **Color:** Various



Caplugs No.	Nominal Pipe Size In	RMC Color	IMC Color	Packaging	
				Carton Quantity	Mini Pak Quantity
OE-311	1/2	Black	Yellow	5000	1000
OE-312	3/4	Red	Green	3500	700
OE-313	1	Blue	Orange	4000	800
OE-314	1-1/4	Red	Green	2500	500
OE-315	1-1/2	Black	Yellow	2000	400
OE-316	2	Blue	Orange	1200	240
OE-317	2-1/2	Black	Yellow	600	120
OE-318	3	Blue	Orange	400	80
OE-319	3-1/2	Black	Yellow	300	60
OE-320	4	Blue	Orange	225	45
OE-321	5	Blue	—	120	24
OE-322	6	Blue	—	80	16



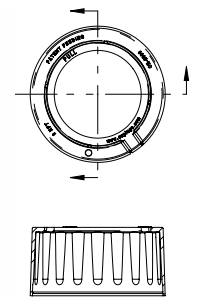
## GRIP IT & RIP IT™ Design

### Open-End Thread Protectors OE Series New Tear-Ring Design

Feature a new patented design that includes vertical ribs to slide over threads, as well as the Grip It and Rip It™ design for quick and easy removal. Each protector also includes an internal bead that keeps moisture from threads.

**Material:** Low-Density Polyethylene **Color:** Various

Caplugs No.	Nominal Pipe Size In	RMC Color	IMC Color	Packaging	
				Carton Quantity	Mini Pak Quantity
OE-0500	1/2	Black	Yellow	5000	1000
OE-0750	3/4	Red	Green	3500	700
OE-1000	1	Blue	Orange	4000	800
OE-1250	1-1/4	Red	Green	2500	500
OE-1500	1-1/2	Black	Yellow	2000	400
OE-2000	2	Blue	Orange	1200	240
OE-2500	2-1/2	Black	Yellow	600	120
OE-3000	3	Blue	Orange	400	80
OE-3500	3-1/2	Black	Yellow	100	20
OE-4000	4	Blue	Orange	225	45
OE-5000	5	Blue	—	120	24
OE-6000	6	Blue	—	40	8
OE-8000	8	Black	—	40	8
OE-10000	10	Black	—	30	6

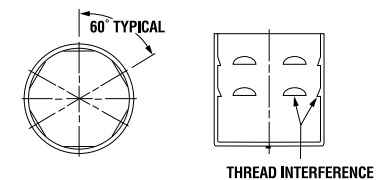


## American Standard Caps (12-thread) PCAS Series

The PCAS Series American Standard caps are designed to fit ASTM-A120 standard Schedule 40 pipes. The caps protect the longer thread form associated with piping used in water wells and irrigation. An interrupted bead ensures that the cap is locked in place.

**Material:** Low-Density Polyethylene **Color:** Orange

Caplugs No.	Dimensions	Packaging	
	To Cap NPT Size (In)	Carton Quantity	Mini Pak Quantity
PCAS-1080	1-1/2	250	50
PCAS-1081	2	500	100
PCAS-1082	2-1/2	300	60
PCAS-1557	3	200	40



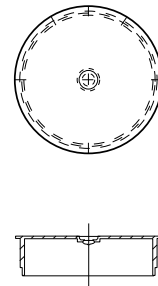


# PIPE CAPS

## Pipe Plugs PVC Series

Provide a tight seal to prevent leaks or other damage, and are designed with straight wall to fit into plastic PVC pipes.

Material: Low-Density Polyethylene Color: Red

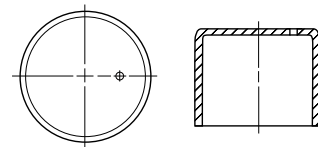


Caplugs No.	Packaging	
	Carton Quantity	Mini Pak Quantity
PVCP-1 1/4-SDR 26/32	2500	1000
PVCP-1 1/2-SDR 26	2000	750
PVCP-2-SDR 26	2500	500
PVCP-2 1/2-SDR 32	1500	300
PVCP-3-SDR 41	800	200
PVCP-3 1/2-SDR 41	600	120
PVCP-4-SDR 41	450	120
PVCP-5-SDR 41	300	80
PVCP-8-SDR 41	100	20

## Vented Pipe Caps VP Series

Equipped with a ventilation hole to prevent pressure build-up that can cause accidental pop off. Defend against damage and contamination with effortless attachment.

Material: Low-Density Polyethylene Color: Blue

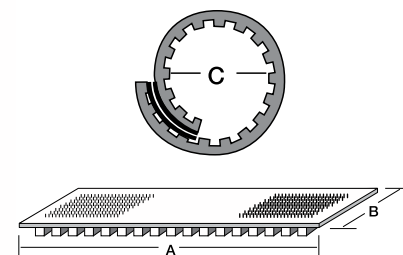


Caplugs No.	Dimensions		Packaging	
	American Standard (In)	Carton Quantity	Mini Pak Quantity	
VP-200	2	500	100	
VP-300	3	200	40	
VP-400	4	300	60	
VP-600	6	120	24	
VP-800	8	70	14	

## Ding Ring Wrap-Arounds DR Series

Universal adjustable rings protect gear and tube sections. Made of flexible PVC. Rings can wrap around any sized tube for impact protection.

Material: Flexible PVC Color: Red

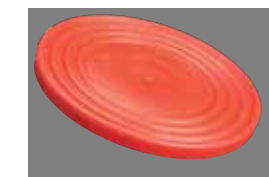
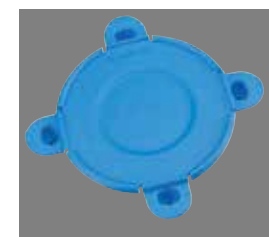


Caplugs No.	Dimensions			Packaging	
	A In	B In	C In	Carton Quantity	Mini Pak Quantity
DR-1	12.75	1.00	Fits tube O.D. from 1 to 4	200	n/a
DR-2	16.25	1.50	Fits tube O.D. from 1 to 5	200	n/a
DR-3	22.00	3.00	Fits tube O.D. from 1 to 7	100	n/a

# PROTECTING ALL OF YOUR FLANGES



## CAPPLUGS' FULL LINE OF FLANGE COVERS



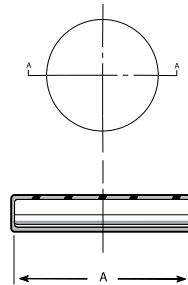
- Provide critical protection from damage and other contaminants
- Maintain the integrity of flange surfaces on valves, fittings, pumps and other products with connection points
- Are available in a wide range of styles and sizes
- Are in stock and ready to ship

# FLANGE COVERS

## Flange Covers CC Series

Cover standard and low-profile sheet metal or machined flanges to prevent damage during maintenance, repair or new construction.

Material: Low-Density Polyethylene Color: Yellow

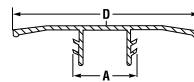


Caplugs No.	Dimensions	Packaging
	A In	Carton Quantity
CC-1	1.545	2500
CC-1-1/4	1.872	2500
CC-1-1/2	2.122	2500
CC-1-3/4	2.372	1000
CC-2	2.622	1000
CC-2-1/4	2.886	1000
CC-2-1/2	3.136	1000
CC-2-3/4	3.386	1000
CC-3	3.636	500
CC-3-1/4	3.886	500
CC-3-1/2	4.141	500
CC-3-3/4	4.391	500
CC-4	4.641	500
CC-4-1/2	5.141	250
CC-5	5.641	250
CC-5-1/4	5.891	250
CC-5-1/2	6.141	250
CC-6	6.656	200
CC-6-1/4	6.906	200
CC-6-1/2	7.156	200
CC-7	7.656	100
CC-9	9.656	150

## Push-In Protectors EPN-305 Series

Universal design allows for use on a variety of flanges and classifications.

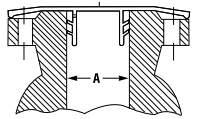
Material: Linear Low-Density Polyethylene Color: Yellow



Caplugs No.	Nominal Size In	Dimensions		Packaging Carton Quantity
		A In	D In	
EPN-305-0375	3/8	.55	3.39	1000
EPN-305-0500	1/2	.75	3.54	1000
EPN-305-0750	3/4	.94	3.94	700
EPN-305-1	1	1.18	4.33	500
EPN-305-1250	1-1/4	1.54	5.35	300
EPN-305-1500	1-1/2	1.77	5.75	250
EPN-305-2	2	2.20	6.30	200
EPN-305-2500	2-1/2	2.83	7.09	200
EPN-305-3	3	3.35	7.72	150
EPN-305-4	4	4.29	8.50	100
EPN-305-5	5	5.28	9.69	75
EPN-305-6	6	6.34	11.02	40
EPN-305-7060	7-1/16	7.38	13.88	15
EPN-305-8	8	8.27	13.23	40
EPN-305-10	10	10.31	15.35	28
EPN-305-12	12	12.52	17.72	20
EPN-305-16	16	16.14	22.83	10

## Push-In Protectors EPN-305 Series (cont.)

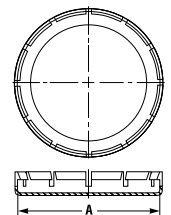
Caplugs No.	Nominal Size In	A		ANSI B 16.5/BS 1560						DIN 2627-2638/BS 4504							
		Minimum In	Maximum In	Cl. 150-300	Cl. 400	Cl. 600	Cl. 900	Cl. 1500	Cl. 2500	PN 10-16	PN 25-40	PN 64	PN 100	PN 160	PN 250	PN 300	PN 400
EPN-305-0375	3/8	.35	.54	X	X	X	X	X	X	X	X	X	X	X	X	X	X
EPN-305-0500	1/2	.52	.68	X	X	X	X	X	X	X	X	X	X	X	X	X	X
EPN-305-0750	3/4	.77	.88	X	X	X	X	X	X	X	X	X	X	X	X	X	X
EPN-305-1	1	.95	1.12	X	X	X	X	X	X	X	X	X	X	X	X	X	X
EPN-305-1250	1-1/4	1.18	1.46	X	X	X	X	X	X	X	X	X	X	X	X	X	X
EPN-305-1500	1-1/2	1.49	1.70	X	X	X	X	X	X	X	X	X	X	X	X	X	X
EPN-305-2	2	1.89	2.15	X	X	X	X			X	X	X	X	X	X	X	X
EPN-305-2500	2-1/2	2.50	2.77	X	X	X	X			X	X	X	X	X			
EPN-305-3	3	2.99	3.25	X	X	X				X	X	X	X	X			
EPN-305-4	4	3.82	4.22	X	X					X	X	X	X	X			
EPN-305-5	5	4.65	5.19	X	X					X	X	X	X	X			
EPN-305-6	6	5.83	6.26	X	X					X	X	X					
EPN-305-8	8	7.24	8.19	X	X					X	X	X					
EPN-305-10	10	9.37	10.25	X	X					X	X	X					
EPN-305-12	12	11.22	12.40	X	X					X	X	X					
EPN-305-16	16	13.98	16.06	X	X					X	X	X					



## Outside Fitting Protectors EPN-310 Series

Push on to cover the entire flange and protect the face and sides. Ideal for coated and conical bore flanges.

Material: Linear Low-Density Polyethylene Color: Yellow



Caplugs No.	Dimensions		Packaging Carton Quantity
	To Cover Flange Sizes (In)	A In	
EPN-310-0500A	150-1/2	3.50	250
EPN-310-0750A	150-3/4	3.88	200
EPN-310-1A	150-1	4.25	150
EPN-310-1500A	150-1-1/2	5.00	175
EPN-310-2A	150-2	6.00	100
EPN-310-3A	150-3	7.50	60
EPN-310-4A	150-4	9.00	40
EPN-310-6A	150-6	11.00	25
EPN-310-10A	150-10	16.00	20
EPN-310-0500B	300-1/2	3.74	200
EPN-310-1B	300-1	4.88	175
EPN-310-2B	300-2	6.50	100
EPN-310-0500C	600-1/2	3.74	200
EPN-310-1C	600-1	4.88	175

# FLANGE COVERS

## Snap-In Flange Protectors FC Series

Protector plugs snap into flange bolt holes with minimal pressure and no fastening devices. Resistant to petroleum residue.

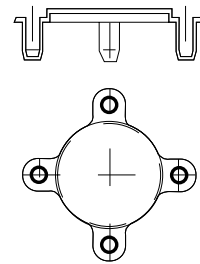
Material: Low-Density Polyethylene Color: Blue - 150 lb. series Black - 300 lb. series



Caplugs No.	Dimensions		Packaging	
	Nominal Size (In)	Carton Quantity	Mini Pak Quantity	
Used on 125 & 150 lb.				
FC-150-0500	1/2	800	160	
FC-150-0750	3/4	800	160	
FC-150-1	1	600	120	
FC-150-1500	1-1/2	400	80	
FC-150-2	2	200	40	
FC-150-3	3	100	20	
FC-150-4	4	100	20	
FC-150-6	6	90	18	
FC-150-8	8	100	20	
FC-150-10	10	60	12	
FC-150-12	12	40	8	

Caplugs No.	Dimensions		Packaging	
	Nominal Size (In)	Carton Quantity	Mini Pak Quantity	
Used on 300, 400 & 600 lb.				
FC-300-0500	1/2	800	160	
FC-300-0750	3/4	500	100	
FC-300-1	1	400	80	
FC-300-1500	1-1/2	250	50	
FC-300-2	2	150	30	
FC-300-3	3	100	20	
FC-300-4 <sup>†</sup>	4	80	16	
FC-300-6 <sup>†</sup>	6	100	20	
FC-300-8 <sup>†</sup>	8	100	20	
FC-300-10 <sup>†</sup>	10	60	12	
FC-300-12 <sup>†</sup>	12	30	6	

<sup>†</sup> Will fit 300 lb. flanges only



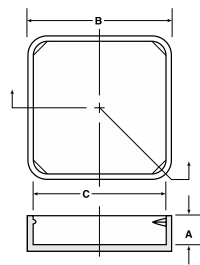
## Caps for Flanged and Flange Mounted Fittings FF Series

Available in square, hexagonal and triangular shapes. Used for a variety of flanged and flange-mounted fittings to protect surfaces and keep assemblies intact when provided with slip-on flanges.

Material: Low-Density Polyethylene Color: Red



Caplugs No.	Shape	To Fit	Dimensions						Packaging	
			A		B		C		Carton Quantity	Mini Pak Quantity
			In	mm	In	mm	In	mm		
FF-26	Square	AN-756-12	.37	9.39	1.68	42.67	1.62	41.14	1000	200
FF-28	Square	AN-756-16	.36	9.14	1.84	46.73	1.78	45.21	1000	200
FF-32	Square	-	.34	8.63	2.11	53.59	2.05	52.07	1000	200
FF-35	Square	AN-756-20	.37	9.39	2.28	57.91	2.22	56.38	500	100
FF-38	Square	AN-756-24	.41	10.41	2.49	63.24	2.40	60.96	500	100
FF-41	Square	MS-9244-32	.44	11.17	2.65	67.31	2.59	65.78	500	100
FF-48	Square	AN-756-32	.42	10.66	3.09	78.48	3.03	76.96	500	100
FF-39	Triangle	MS-9233-24	.44	11.17	-	-	-	-	500	100
FF-64	Hex	AN-756-40	.43	10.92	-	-	-	-	250	50
FF-72	Hex	AN-756-48	.43	10.92	-	-	-	-	250	50



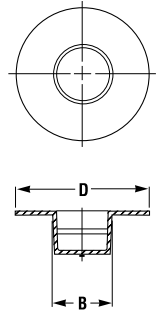
## Valve Flange Protectors FLGV Series

Engineered with a tapered body and wide flange to protect entire machined surface from dirt or contaminants. Protectors only fit Schedule 40 flange bores for Schedule 40 pipes. Double as paint masks.

Material: Low-Density Polyethylene Color: Orange



Caplugs No.	Nominal Size In	Dimensions		Packaging	
		B In	D In	Carton Quantity	Mini Pak Quantity
FLGV-109	1/2	.585	1.440	4000	800
FLGV-110	3/4	.750	1.688	2500	500
FLGV-111	1	.970	2.000	800	160
FLGV-112	1-1/4	1.400	3.560	500	100
FLGV-113	1-1/2	1.640	2.875	500	100
FLGV-114	2	2.100	3.625	250	50
FLGV-115	2-1/2	2.500	4.125	250	50
FLGV-115-1	2-1/2	2.500	5.125	700	140
FLGV-116	3	3.150	6.050	400	80
FLGV-117	3-1/2	3.580	5.590	450	90
FLGV-118	4	4.140	6.310	250	50
FLGV-119	5	5.080	7.312	200	40
FLGV-120	6	6.100	8.500	150	30



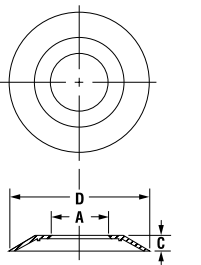
## Finishing Flanges - Non-Corroding FN Series

Durable, non-corroding finishing flanges ensure a long-lasting appearance, and are an economical replacement for metal flanges.

Material: Linear Low-Density Polyethylene Color: White



Caplugs No.	Common Uses	Dimensions						Packaging
		A		C		D		Carton Quantity
		In	mm	In	mm	In	mm	
FN-179-1	Fits 1/4 Pipe	0.531	13.49	0.2	5.08	2.12	53.85	3000
FN-179-7	Fits 1/4 Pipe	0.625	15.88	0.2	5.08	2.12	53.85	3000
FN-179-3	Fits 1/2 Pipe	0.812	20.62	0.2	5.08	2.12	53.85	3000
FN-180	Fits 3/4 Pipe	1	25.4	0.44	11.18	2.88	73.15	2000
FN-182	Fits 3/4 Pipe	1	25.4	0.31	7.87	3.25	82.55	1000
FN-186	Fits 3/4 Pipe	1	25.4	0.38	9.65	2.38	60.45	2500
FN-177	Fits 3/4 Pipe	1.025	26.04	0.28	7.11	2.5	63.5	2500
FN-182-3	Fits 1 Pipe	1.312	33.32	0.31	7.87	3.25	82.55	1000
FN-182-6	Fits 1 Pipe	1.531	38.89	0.31	7.87	3.25	82.55	1000
FN-182-2	Fits 1-1/4 Pipe	1.625	41.28	0.31	7.87	3.25	82.55	1000
FN-182-7	Fits 1-1/2 Pipe	1.89	48.01	0.31	7.87	3.25	82.55	1000
FN-187-2	Fits 2 Pipe	2.312	58.72	0.31	7.87	3.5	88.9	1000
FN-187	Fits 2 O.D. Tube	2	50.8	0.31	7.87	3.5	88.9	1000



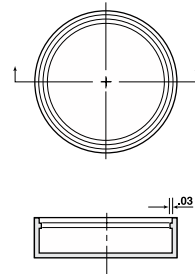


# FLANGE COVERS

## High-Pressure Split-Flange Covers HSF Series

Designed with translucent, low-density polyethylene to protect high-pressure split-flange connections. Attach easily with an internal bead that provides a positive locking grip. O-ring remains clearly discernible.

Material: Low-Density Polyethylene Color: Natural

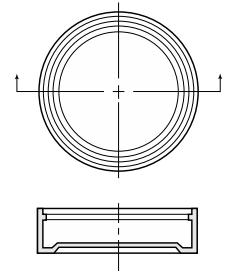


Caplugs No.	Dimensions		Packaging	
	To Cap Nominal Flange Size (In)		Carton Quantity	Mini Pak Quantity
HSF-8	1/2		3000	600
HSF-12	3/4		2000	400
HSF-16	1		1000	200
HSF-20	1-1/4		1000	200
HSF-24	1-1/2		800	160
HSF-32	2		500	100
HSF-44	n/a		500	100

## Caps for Split-Flange Connections SF Series

Protect split-flange connections. Push on with an internal bead for a positive locking grip. Manufactured with natural, translucent polyethylene. O-ring remains visible after closure is applied.

Material: Low-Density Polyethylene Color: Natural

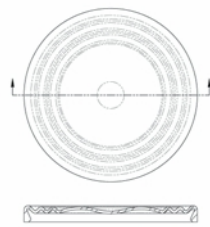


Caplugs No.	Dimensions		Packaging	
	To Cap Nominal Flange Size (In)	To Cap Ferrule Size (In)	Carton Quantity	Mini Pak Quantity
SF-7	-	1/2, 3/4	5000	1000
SF-CC-8	1/2	-	3000	600
SF-10	5/8	-	2500	500
SF-12	3/4	-	2500	500
SF-16	1	-	2500	500
SF-20	1-1/4	1, 1-1/2	1000	200
SF-24	1-1/2	-	1000	200
SF-28	-	2	1000	200
SF-32	2	-	1000	200
SF-36	-	2-1/2	900	180
SF-CC-40	2-1/2	-	500	100
SF-44	-	3	600	120
SF-48	3	-	500	100
SF-64	-	4	400	80

## Raised-Face Flange Protectors RFP Series

Designed for ANSI B-16.5 – pressure classes 400, 600, 900, 1500 and 2500 lb. Provide superior impact protection for raised-face surfaces, with no fasteners required. Help reduce SKU inventory and can also serve as a low-temperature paint mask.

Material: Low-Density Polyethylene Color: Red

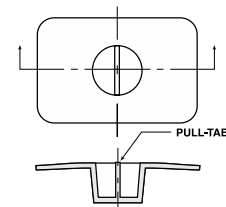


Caplugs No.	Pressure Class (lb)	Nominal Pipe Size (In)	Carton Quantity	Mini Pak Quantity
RFP-1000	400, 600, 900, 1500, 2500	1	1250	250
RFP-2000	400, 600, 900, 1500, 2500	2	500	100
RFP-2500	400, 600, 900, 1500, 2500	2-1/2	400	80
RFP-3000	400, 600, 900, 1500, 2500	3	300	60
RFP-4000	400, 600, 900, 1500, 2500	4	200	40
RFP-6000	400, 600, 900, 1500, 2500	6	100	20
RFP-8000	400, 600, 900, 1500, 2500	8	75	15

## Covers for Split-Flange Connections SFP Series

For use on SAE 3000 lb., four-bolt split hydraulic flanges. Protect port and flange surface by fitting securely into opening.

Material: Low-Density Polyethylene Color: Red



Caplugs No.	Dimensions		Packaging	
	To Cover Flange Dash Size (In)	To Fit Dim Flange Size (In)	Carton Quantity	Mini Pak Quantity
SFP-12	-12	3/4	2500	500
SFP-16	-16	1	1000	200
SFP-20	-20	1-1/4	1000	200
SFP-24	-24	1-1/2	500	100
SFP-32	-32	2	500	100
SFP-40	-40	2-1/2	250	50

# FLANGE COVERS

## Toggle Lock Flange Covers TLF Series

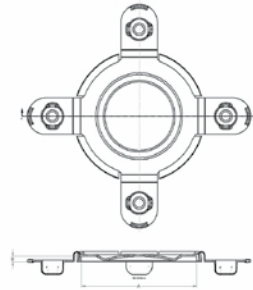
Engineered for ANSI B-16.5 flanges, our patent-pending design with four hinged plugs can be pressed into bolt holes one at a time for faster installation than traditional covers. Each cover features a thick pad for impact protection, with reinforced walls to reduce warping and allow for greater surface contact. Also permit the use of a paint hook, or can be removed for a bolt.



**Material:** Low-Linear Polyethylene **Color:** Blue, Red or Black

Caplugs No.	Pressure Class (lb)	Nominal Pipe Size (in)	API Nominal Flange Size	Carton Quantity	Mini Pak Quantity
TLF-150-0500	150	1/2		800	160
TLF-150-0750	150	3/4		700	140
TLF-150-1000	150	1		600	120
TLF-150-1250	150	1-1/4		500	100
TLF-150-1500	150	1-1/2		400	80
TLF-150-2000	150	2		300	60
TLF-150-2500	150	2-1/2		200	40
TLF-150-3000	150	3		200	40
TLF-150-3500	150	3-1/2		150	30
TLF-150-4000	150	4		150	30
TLF-150-6000	150	6		100	20
TLF-150-8000	150	8		30	6
TLF-150-10000	150	10		30	6
TLF-150-12000	150	12		40	8
TLF-150-14000	150	14		25	5
TLF-300-0500	300, 400, 600	1/2		700	140
TLF-300-0750	300, 400, 600	3/4		500	100
TLF-300-1000	300, 400, 600	1		400	80
TLF-300-1250	300, 400, 600	1-1/4		300	60
TLF-300-1500	300, 400, 600	1-1/2		250	50
TLF-300-2000	300, 400, 600	2		200	40
TLF-300-2500	300, 400, 600	2-1/2	1-3/16 10000	150	30
TLF-300-3000	300, 400, 600	3		125	25
TLF-300-3500	300	3-1/2		100	20
TLF-300-4000	300	4		80	16
TLF-300-6000	300	6		50	10
TLF-300-8000	300	8		30	6
TLF-300-10000	300	10		30	6
TLF-300-12000	300	12		40	8
TLF-300-14000	300	14		50	10
TLF-600-4000	600	4	4-1/16 2000	100	20
TLF-600-6000	600	6	7-1/16 2000	30	6
TLF-600-8000	600	8	9 2000	30	6
TLF-600-10000	600	10	11 2000	30	6
TLF-600-12000	600	12	13-5/8 2000	50	10
TLF-900-2000	900/1500	2	2-1/16 3000	100	20
TLF-900-3000	900	3	3-1/8 3000	75	15
TLF-900-4000	900	4	4-1/16 3000	50	10
TLF-900-6000	900	6	7-1/16 3000	30	6
TLF-1500-2500	1500	2-1/2	2-9/16 5000	80	16
TLF-1500-3000	1500	3	3-1/8 5000	50	10
TLF-1500-4000	1500	4	4-1/16 5000	50	10
TLF-1500-6000	1500	6	7-1/16 5000	25	5
TLF-2060-10m	10000		2-1/16 10000	125	25
TLF-2500-2000	2500	2		100	20
TLF-2500-3000	2500	3		50	10

150 lb. pressure class - Standard color: Blue or Red  
 300 lb. through 2500 lb. pressure class - Standard color: Black



### Easy Installation and Removal



## Vinyl ASA Flange Covers VAS Series

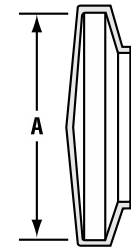
Guard against dust and moisture during shipment; accommodate most American Standard Association, Navy and Military sizes.

**Material:** Vinyl **Color:** Yellow **Optional Colors:** White, Black, Brown, Orange, Red, Green, Gray or Blue



Caplugs No.	Dimensions	Packaging	
	A In	Carton Quantity	Mini Pak <sup>†</sup> Quantity
VAS-3500-6	3.500	250	50
VAS-3750-8	3.750	200	40
VAS-3870-8	3.870	200	40
VAS-4250-7	4.250	200	40
VAS-4620-9	4.620	100	20
VAS-4870-10	4.870	100	20
VAS-5000-9	5.000	100	20
VAS-5250-12	5.250	100	20
VAS-6000-10	6.000	100	20
VAS-6120-13	6.120	100	20
VAS-6500-14	6.500	80	n/a
VAS-7000-12	7.000	70	n/a
VAS-7500-14	7.500	60	n/a
VAS-8250-19	8.250	20	n/a
VAS-9000-15	9.000	20	n/a
VAS-10000-14	10.030	20	n/a
VAS-10750-24	10.750	20	n/a
VAS-11000-16	11.000	20	n/a
VAS-12500-22	12.500	20	n/a

<sup>†</sup> Mini Paks available in standard color only.

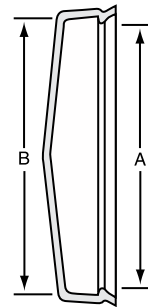


# FLANGE COVERS

## Vinyl Snap Ring Flange Covers VSR Series

Designed to snap on tightly to seal flange during shipment.

Material: Vinyl Color: Yellow Optional Colors: White, Black, Brown, Orange, Red, Green, Gray or Blue



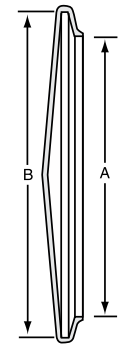
Caplugs No.	Dimensions		Packaging	
	A In	B In	Carton Quantity	Mini Pak <sup>†</sup> Quantity
VSR-750	.650	.750	1000	200
VSR-1000	.870	1.000	1000	200
VSR-1150	1.050	1.150	1000	200
VSR-1250	1.150	1.250	1000	200
VSR-1500	1.450	1.550	1000	200
VSR-1650	1.650	1.800	1000	200
VSR-1750	1.700	1.800	1000	200
VSR-2000	1.950	2.050	1000	200
VSR-2150	2.050	2.150	500	100
VSR-2250	2.150	2.280	500	100
VSR-2500	2.400	2.620	500	100
VSR-2750	2.650	2.800	500	100
VSR-3000	2.850	3.050	250	n/a
VSR-3250	3.150	3.300	250	n/a
VSR-3500	3.400	3.600	250	n/a
VSR-3750	3.650	3.850	250	50
VSR-4000	3.900	4.080	250	n/a
VSR-4250	4.150	4.320	250	50
VSR-4500	4.400	4.600	250	n/a
VSR-4750	4.650	4.850	250	n/a
VSR-5000	4.900	5.100	200	n/a
VSR-5250	5.150	5.350	200	n/a
VSR-5500	5.400	5.620	150	n/a
VSR-5750	5.700	5.850	150	n/a
VSR-6000	5.900	6.180	150	n/a
VSR-6250	6.180	6.400	150	n/a
VSR-6500	6.450	6.650	100	n/a
VSR-6750	6.700	6.900	100	n/a
VSR-7000	6.950	7.150	100	n/a
VSR-7250	7.200	7.400	100	n/a
VSR-7500	7.450	7.650	100	n/a
VSR-7750	7.700	7.900	75	n/a
VSR-8000	7.950	8.150	75	n/a
VSR-8250	8.250	8.450	75	n/a
VSR-8500	8.450	8.700	75	n/a
VSR-8750	8.600	8.800	75	n/a
VSR-9000	8.800	9.000	75	n/a
VSR-9500	9.350	9.550	50	n/a
VSR-9750	9.700	10.050	50	n/a
VSR-10000	9.900	10.050	50	n/a
VSR-10250	10.100	10.300	40	n/a
VSR-10500	10.400	10.650	30	n/a
VSR-11000	10.900	11.050	30	n/a
VSR-11420	11.100	11.420	30	n/a
VSR-12000	11.800	12.000	30	n/a
VSR-12250	12.150	12.350	20	n/a
VSR-13500	13.500	13.750	20	n/a
VSR-14500	14.500	14.750	10	n/a

<sup>†</sup> Mini Paks available in standard color only.

## Vinyl Flange Covers VF Series

Quick and easy to apply, these covers provide a snug fit for flanged and beaded tubes.

Material: Vinyl Color: Yellow Optional Colors: White, Black, Brown, Orange, Red, Green, Gray or Blue



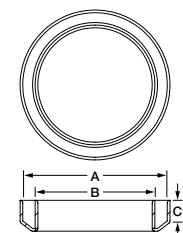
Caplugs No.	Dimensions		Packaging	
	A In	B In	Carton Quantity	Mini Pak <sup>†</sup> Quantity
VF-680	.680	1.310	2000	400
VF-930	.930	1.550	1500	300
VF-1000	1.000	1.620	1500	300
VF-1310	1.310	1.930	1000	200
VF-1500	1.500	2.195	900	180
VF-2000	2.000	2.695	600	120
VF-2180	2.180	2.860	500	100
VF-2500	2.500	3.180	400	80
VF-2930	2.930	3.560	400	80
VF-3000	3.000	3.600	400	80
VF-3500	3.500	4.155	300	60
VF-4000	4.000	4.690	250	50
VF-4250	4.250	4.940	200	40
VF-4500	4.500	5.190	200	40
VF-4750	4.750	5.440	200	40
VF-5000	5.000	5.690	100	20
VF-5250	5.250	5.940	100	20
VF-5500	5.500	6.190	100	20
VF-6000	6.000	6.690	100	20
VF-6500	6.500	7.190	100	20

<sup>†</sup> Mini Paks available in standard color only.

## Weld Neck Covers WNC Series

Covers machined weld-neck end of flanges, opposite raised face, to avoid damage in transit or storage. Commonly used by carbon and stainless-steel flange manufacturers.

Material: Vinyl Color: Black



Caplugs No.	Dimensions	Packaging	
	Nominal Pipr Size (In)	Carton Quantity	Mini Pak Quantity
WNC-0500	1/2	2500	500
WNC-1000	1	2500	500
WNC-1500	1-1/2	1000	200
WNC-2000	2	750	150
WNC-3000	3	250	50
WNC-4000	4	250	50
WNC-6000	6	100	20
WNC-8000	8	50	10

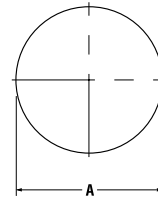


# FLANGE COVERS

## Full-Face Protectors FAF Series

Self-adhesive flange parts that conceal the entire face of the flange and sealing surface. Protective backing is easily peeled off for quick installation. No residue is left on flange after removal. Sized in accordance to ANSI B-16.5 and ANSI B-16.47.

Material: High-Density Polyethylene Color: Black



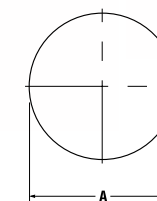
Caplugs No.	Dimensions		Packaging Minimum Sales Quantity
	Nominal Size In	A In	
<b>75 Class Pressure Rating</b>			
FAF-75-26	26	30.00	2
FAF-75-28	28	32.00	2
FAF-75-30	30	34.00	2
FAF-75-32	32	36.00	2
FAF-75-34	34	38.00	2
FAF-75-36	36	40.69	2
FAF-75-38	38	42.69	2
FAF-75-40	40	44.69	2
FAF-75-42	42	46.69	2
FAF-75-44	44	49.25	2
FAF-75-46	46	51.25	2
FAF-75-48	48	53.25	2
<b>150 Class Pressure Rating</b>			
FAF-150-1/2	1/2	3.50	100
FAF-150-3/4	3/4	3.88	75
FAF-150-1	1	4.25	50
FAF-150-1-1/4	1-1/4	4.63	50
FAF-150-1-1/2	1-1/2	5.00	35
FAF-150-2	2	6.00	25
FAF-150-2-1/2	2-1/2	7.00	25
FAF-150-3	3	7.50	20
FAF-150-3-1/2	3-1/2	8.50	15
FAF-150-4	4	9.00	15
FAF-150-5	5	10.00	10
FAF-150-6	6	11.00	8
FAF-150-8	8	13.50	5
FAF-150-10	10	16.00	4
FAF-150-12	12	19.00	4
FAF-150-14	14	21.00	2
FAF-150-16	16	23.50	2
FAF-150-18	18	25.00	2
FAF-150-20	20	27.50	2
FAF-150-22	22	29.50	2
FAF-150-24	24	32.00	2
FAF-150-26A	26	34.25	2
FAF-150-26B	26	30.94	2
FAF-150-28A	28	36.50	2
FAF-150-28B	28	32.94	2
FAF-150-30A	30	38.75	2
FAF-150-30B	30	34.94	2
FAF-150-32A	32	41.75	2
FAF-150-32B	32	37.06	2
FAF-150-34A	34	43.75	2

Caplugs No.	Dimensions		Packaging Minimum Sales Quantity
	Nominal Size In	A In	
<b>150 Class Pressure Rating (cont.)</b>			
FAF-150-34B	34	39.56	2
FAF-150-36A	36	46.00	2
FAF-150-36B	36	41.62	2
FAF-150-38A	38	48.75	2
FAF-150-38B	38	44.25	2
FAF-150-40A	40	50.75	2
FAF-150-40B	40	46.25	2
FAF-150-42A	42	53.00	2
FAF-150-42B	42	48.25	2
<b>300 Class Pressure Rating</b>			
FAF-300-1/2	1/2	3.75	75
FAF-300-3/4	3/4	4.63	50
FAF-300-1	1	4.88	50
FAF-300-1-1/4	1-1/4	5.25	40
FAF-300-1-1/2	1-1/2	6.19	35
FAF-300-2	2	6.50	30
FAF-300-2-1/2	2-1/2	7.50	25
FAF-300-3	3	8.25	20
FAF-300-3-1/2	3-1/2	9.00	15
FAF-300-4	4	10.00	15
FAF-300-5	5	11.00	10
FAF-300-6	6	12.50	10
FAF-300-8	8	15.00	5
FAF-300-10	10	17.50	5
FAF-300-12	12	20.50	4
FAF-300-14	14	23.00	2
FAF-300-16	16	25.50	2
FAF-300-18	18	28.00	2
FAF-300-20	20	30.50	2
FAF-300-22	22	33.00	2
FAF-300-24	24	36.00	2
FAF-300-26A	26	38.25	2
FAF-300-26B	26	34.12	2
FAF-300-28A	28	40.75	2
FAF-300-28B	28	36.25	2
FAF-300-30A	30	43.00	2
FAF-300-30B	30	39.00	2
FAF-300-32A	32	45.25	2
FAF-300-32B	32	41.50	2
FAF-300-34A	34	47.50	2
FAF-300-34B	34	43.62	2
FAF-300-36A	36	50.00	2
FAF-300-36B	36	46.12	2
FAF-300-38A	38	46.00	2
FAF-300-38B	38	48.12	2
FAF-300-40A	40	48.75	2
FAF-300-40B	40	50.12	2
FAF-300-42A	42	50.75	2
FAF-300-42B	42	52.50	2

## Full-Face Protectors FAF Series (cont.)

Caplugs No.	Dimensions		Packaging Minimum Sales Quantity
	Nominal Size In	A In	
<b>400 Class Pressure Rating</b>			
FAF-400-1/2	1/2	3.75	75
FAF-400-3/4	3/4	4.62	50
FAF-400-1	1	4.88	50
FAF-400-1-1/4	1-1/4	5.25	40
FAF-400-1-1/2	1-1/2	6.12	35
FAF-400-2	2	6.50	35
FAF-400-2-1/2	2-1/2	7.50	25
FAF-400-3	3	8.25	20
FAF-400-3-1/2	3-1/2	9.00	15
FAF-400-4	4	10.00	15
FAF-400-5	5	11.00	10
FAF-400-6	6	12.50	10
FAF-400-8	8	15.00	5
FAF-400-10	10	17.50	5
FAF-400-12	12	20.50	4
FAF-400-14	14	23.00	2
FAF-400-16	16	25.50	2
FAF-400-18	18	28.00	2
FAF-400-20	20	30.50	2
FAF-400-22	22	33.00	2
FAF-400-24	24	36.00	2
FAF-400-26A	26	38.25	2
FAF-400-26B	26	33.50	2
FAF-400-28A	28	40.75	2
FAF-400-28B	28	36.00	2
FAF-400-30A	30	43.00	2
FAF-400-30B	30	38.25	2
FAF-400-32A	32	45.25	2
FAF-400-32B	32	40.75	2
FAF-400-34A	34	47.50	2
FAF-400-34B	34	42.75	2
FAF-400-36A	36	50.00	2
FAF-400-36B	36	45.50	2
FAF-400-38A	38	47.50	2
FAF-400-38B	38	47.50	2
FAF-400-40A	40	50.00	2
FAF-400-40B	40	50.00	2
FAF-400-42A	42	52.00	2
FAF-400-42B	42	52.00	2

Caplugs No.	Dimensions		Packaging Minimum Sales Quantity
	Nominal Size In	A In	
<b>600 Class Pressure Rating</b>			
FAF-600-1/2	1/2	3.75	75
FAF-600-3/4	3/4	4.62	50
FAF-600-1	1	4.88	50
FAF-600-1-1/4	1-1/4	5.25	50
FAF-600-1-1/2	1-1/2	6.12	35
FAF-600-2	2	6.50	30
FAF-600-2-1/2	2-1/2	7.50	25
FAF-600-3	3	8.25	20
FAF-600-3-1/2	3-1/2	9.00	15
FAF-600-4	4	10.75	10
FAF-600-5	5	13.00	8
FAF-600-6	6	14.00	5
FAF-600-8	8	16.50	5
FAF-600-10	10	20.00	4
FAF-600-12	12	22.00	4
FAF-600-14	14	23.75	2
FAF-600-16	16	27.00	2
FAF-600-18	18	29.25	2
FAF-600-20	20	32.00	2
FAF-600-22	22	34.25	2
FAF-600-24	24	37.00	2
FAF-600-26A	26	40.00	2
FAF-600-26B	26	35.00	2
FAF-600-28A	28	42.25	2
FAF-600-28B	28	37.50	2
FAF-600-30A	30	44.50	2
FAF-600-30B	30	40.25	2
FAF-600-32A	32	47.00	2
FAF-600-32B	32	42.75	2
FAF-600-34A	34	49.00	2
FAF-600-34B	34	45.75	2
FAF-600-36A	36	51.75	2
FAF-600-36B	36	47.75	2
FAF-600-38A	38	50.00	2
FAF-600-38B	38	50.00	2
FAF-600-40A	40	52.00	2
FAF-600-40B	40	52.00	2

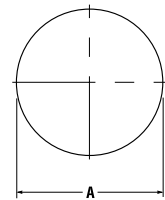


# FLANGE COVERS

## Full-Face Protectors FAF Series (cont.)



Caplugs No.	Dimensions		Packaging Minimum Sales Quantity
	Nominal Size In	A In	
<b>900 Class Pressure Rating</b>			
FAF-900-1/2	1/2	4.75	50
FAF-900-3/4	3/4	5.12	50
FAF-900-1	1	5.88	40
FAF-900-1 1/4	1-1/4	6.25	40
FAF-900-1 1/2	1-1/2	7.00	25
FAF-900-2	2	8.50	20
FAF-900-2 1/2	2-1/2	9.62	15
FAF-900-3	3	9.50	15
FAF-900-4	4	11.50	10
FAF-900-5	5	13.75	8
FAF-900-6	6	15.00	5
FAF-900-8	8	18.50	4
FAF-900-10	10	21.50	4
FAF-900-12	12	24.00	2
FAF-900-14	14	25.25	2
FAF-900-16	16	27.75	2
FAF-900-18	18	31.00	2
FAF-900-20	20	33.75	2
FAF-900-24	24	41.00	2
FAF-900-26A	26	42.75	2
FAF-900-26B	26	40.25	2
FAF-900-28A	28	46.00	2
FAF-900-28B	28	43.50	2
FAF-900-30A	30	48.50	2
FAF-900-30B	30	46.50	2
FAF-900-32A	32	51.75	2
FAF-900-32B	32	48.75	2
FAF-900-34A	34	55.00	2
FAF-900-34B	34	51.75	2



Caplugs No.	Dimensions		Packaging Minimum Sales Quantity
	Nominal Size In	A In	
<b>1500 Class Pressure Rating</b>			
FAF-1500-1/2	1/2	4.75	50
FAF-1500-3/4	3/4	5.12	50
FAF-1500-1	1	5.88	40
FAF-1500-1 1/4	1-1/4	6.25	35
FAF-1500-1 1/2	1-1/2	7.00	25
FAF-1500-2	2	8.50	20
FAF-1500-2 1/2	2-1/2	9.62	15
FAF-1500-3	3	10.50	10
FAF-1500-4	4	12.25	10
FAF-1500-5	5	14.75	5
FAF-1500-6	6	15.50	5
FAF-1500-8	8	19.00	4
FAF-1500-10	10	23.00	2
FAF-1500-12	12	26.50	2
FAF-1500-14	14	29.50	2
FAF-1500-16	16	32.50	2
FAF-1500-18	18	36.00	2
FAF-1500-20	20	38.75	2
FAF-1500-24	24	46.00	2
<b>2500 Class Pressure Rating</b>			
FAF-2500-1/2	1/2	5.25	50
FAF-2500-3/4	3/4	5.50	40
FAF-2500-1	1	6.25	35
FAF-2500-1 1/4	1-1/4	7.25	25
FAF-2500-1 1/2	1-1/2	8.00	20
FAF-2500-2	2	9.25	15
FAF-2500-2 1/2	2-1/2	10.50	10
FAF-2500-3	3	12.00	10
FAF-2500-4	4	14.00	8
FAF-2500-5	5	16.50	5
FAF-2500-6	6	19.00	4
FAF-2500-8	8	21.75	4
FAF-2500-10	10	26.50	2
FAF-2500-12	12	30.00	2

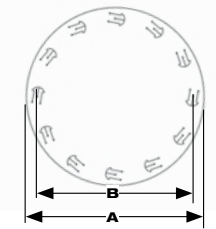
## Finger-Lock Flange Covers FFP Series

New die-cut configuration featuring locking bolt hole tabs to keep protector in place without adhesive or separate fasteners.

Material: Low-Density Polyethylene Color: Black



Caplugs No.	Nominal Pipe Size (In)	Dimension A (In)	Dimension B (In)	Carton Quantity
FFP-150-1	1	4.25	3.12	50
FFP-150-2	2	6.00	4.75	50
FFP-300-6	6	12.50	10.62	50
FFP-600-4	4	10.75	8.50	50
FFP-900-6	6	15.00	12.50	50
FFP-1500-6	6	15.50	12.50	50
FFP-2500-2	2	9.25	6.75	50



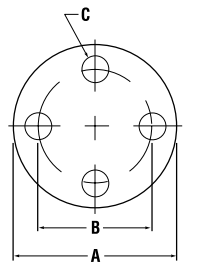
## Flange Covers with Bolt Holes FAN Series

Securely covers full face of any ANSI B-16.5 and ANSI B-16.47 flanges and sealing surfaces with use of additional plugs (FBH Series) or cable ties (CAB Series) through four bolt holes.

Material: High-Density Polyethylene Color: Black



Caplugs No.	Nom Pipe Size (In)	Dimensions			Min Sales Quantity	Fasteners	
		A In	B In	C In		Matching Bolt Hole Plug	Cable Tie
<b>75 Class Pressure Rating</b>							
FAN-75-26	26	30.00	28.50	.81	5	FBH-750	CAB-B11SOM
FAN-75-28	28	32.00	30.50	.81	4	FBH-750	CAB-B11SOM
FAN-75-30	30	34.00	32.50	.81	2	FBH-750	CAB-B11SOM
FAN-75-32	32	36.00	34.50	.81	2	FBH-750	CAB-B11SOM
FAN-75-34	34	38.00	36.50	.81	2	FBH-750	CAB-B11SOM
FAN-75-36	36	40.69	39.06	.94	2	FBH-875	CAB-B11SOM
FAN-75-38	38	42.69	41.06	.94	2	FBH-875	CAB-B11SOM
FAN-75-40	40	44.69	43.06	.94	2	FBH-875	CAB-B11SOM
FAN-75-42	42	46.69	45.06	.94	2	FBH-875	CAB-B11SOM
FAN-75-44	44	49.25	47.38	1.06	2	FBH-1000	CAB-B11SOM
FAN-75-46	46	51.25	49.38	1.06	2	FBH-1000	CAB-B11SOM
FAN-75-48	48	53.25	51.38	1.06	2	FBH-1000	CAB-B14SOM
FAN-75-50	50	55.25	53.38	1.06	2	FBH-1000	CAB-B14SOM
FAN-75-52	52	57.38	55.50	1.06	2	FBH-1000	CAB-B14SOM
FAN-75-54	54	59.38	57.50	1.06	2	FBH-1000	CAB-B14SOM

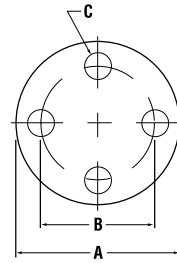


# FLANGE COVERS

## Flange Covers with Bolt Holes FAN Series(cont.)



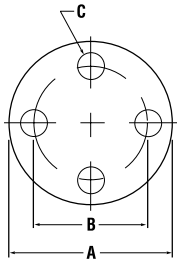
Caplugs No.	Nom Pipe Size (In)	Dimensions			Min Sales Quantity	Fasteners	
		A In	B In	C In		Matching Bolt Hole Plug	Cable Tie
<b>150 Class Pressure Rating</b>							
FAN-150-1/2	1/2	3.50	2.38	.68	150	FBH-625	CAB-B7SOM
FAN-150-3/4	3/4	3.88	2.75	.68	150	FBH-625	CAB-B7SOM
FAN-150-1	1	4.25	3.12	.68	100	FBH-625	CAB-B7SOM
FAN-150-1-1/4	1-1/4	4.62	3.50	.68	100	FBH-625	CAB-B7SOM
FAN-150-1-1/2	1-1/2	5.00	3.88	.68	100	FBH-625	CAB-B7SOM
FAN-150-2	2	6.00	4.75	.68	75	FBH-625	CAB-B7SOM
FAN-150-2-1/2	2-1/2	7.00	5.50	.81	50	FBH-750	CAB-B11SOM
FAN-150-3	3	7.50	6.00	.81	50	FBH-750	CAB-B11SOM
FAN-150-3-1/2	3-1/2	8.50	7.00	.81	50	FBH-750	CAB-B11SOM
FAN-150-4	4	9.00	7.50	.81	40	FBH-750	CAB-B11SOM
FAN-150-5	5	10.00	8.50	.94	35	FBH-875	CAB-B11SOM
FAN-150-6	6	11.00	9.50	.94	25	FBH-875	CAB-B11SOM
FAN-150-8	8	13.50	11.75	.94	20	FBH-875	CAB-B11SOM
FAN-150-10	10	16.00	14.25	1.06	15	FBH-1000	CAB-B11SOM
FAN-150-12	12	19.00	17.00	1.06	10	FBH-1000	CAB-B11SOM
FAN-150-14	14	21.00	18.75	1.18	10	FBH-1125	CAB-B11SOM
FAN-150-16	16	23.50	21.25	1.18	5	FBH-1125	CAB-B11SOM
FAN-150-18	18	25.00	22.75	1.31	5	FBH-1250	CAB-B11SOM
FAN-150-20	20	27.50	25.00	1.31	5	FBH-1250	CAB-B11SOM
FAN-150-22	22	29.50	27.25	1.44	5	FBH-1375	CAB-B11SOM
FAN-150-24	24	32.00	29.50	1.44	4	FBH-1375	CAB-B14SOM
FAN-150-26A	26	34.25	31.75	1.44	4	FBH-1375	CAB-B14SOM
FAN-150-26B	26	30.94	29.31	.94	4	FBH-875	CAB-B11SOM
FAN-150-28A	28	36.50	34.00	1.44	2	FBH-1375	CAB-B14SOM
FAN-150-28B	28	32.94	31.31	.94	2	FBH-875	CAB-B11SOM
FAN-150-30A	30	38.75	36.00	1.44	2	FBH-1375	CAB-B14SOM
FAN-150-30B	30	34.94	33.31	.94	2	FBH-875	CAB-B11SOM
FAN-150-32A	32	41.75	38.50	1.68	2	FBH-1625	CAB-B24HOL
FAN-150-32B	32	37.06	35.44	.94	2	FBH-875	CAB-B11SOM
FAN-150-34A	34	43.75	40.50	1.68	2	FBH-1625	CAB-B24HOL
FAN-150-34B	34	39.56	37.69	1.06	2	FBH-1000	CAB-B11SOM
FAN-150-36A	36	46.00	42.75	1.68	2	FBH-1625	CAB-B24HOL
FAN-150-36B	36	41.62	39.75	1.06	2	FBH-1000	CAB-B11SOM
FAN-150-38A	38	48.75	45.25	1.68	2	FBH-1625	CAB-B24HOL
FAN-150-38B	38	44.25	42.12	1.18	2	FBH-1125	CAB-B14SOM
FAN-150-40A	40	50.75	47.25	1.68	2	FBH-1625	CAB-B24HOL
FAN-150-40B	40	46.25	44.12	1.18	2	FBH-1125	CAB-B14SOM
FAN-150-42A	42	53.00	49.50	1.68	2	FBH-1625	CAB-B24HOL
FAN-150-42B	42	48.25	46.12	1.18	2	FBH-1125	CAB-B14SOM
FAN-150-44A	44	55.25	51.75	1.68	2	FBH-1625	CAB-B24HOL
FAN-150-44B	44	50.25	48.12	1.18	2	FBH-1125	CAB-B14SOM
FAN-150-46A	46	57.25	53.75	1.68	2	FBH-1625	CAB-B24HOL
FAN-150-46B	46	52.81	50.56	1.31	2	FBH-1250	CAB-B14SOM
FAN-150-48A	48	59.50	56.00	1.68	2	FBH-1625	CAB-B24HOL
FAN-150-48B	48	54.81	52.56	1.31	2	FBH-1250	CAB-B14SOM



## Flange Covers with Bolt Holes FAN Series(cont.)



Caplugs No.	Nom Pipe Size (In)	Dimensions			Min Sales Quantity	Fasteners	
		A In	B In	C In		Matching Bolt Hole Plug	Cable Tie
<b>300 Class Pressure Rating</b>							
FAN-300-1/2	1/2	3.75	2.62	.68	150	FBH-625	CAB-B7SOM
FAN-300-3/4	3/4	4.62	3.25	.81	100	FBH-750	CAB-B7SOM
FAN-300-1	1	4.88	3.50	.81	100	FBH-750	CAB-B7SOM
FAN-300-1-1/4	1-1/4	5.25	3.88	.81	100	FBH-750	CAB-B7SOM
FAN-300-1-1/2	1-1/2	6.12	4.50	.94	75	FBH-875	CAB-B11SOM
FAN-300-2	2	6.50	5.00	.81	75	FBH-750	CAB-B11SOM
FAN-300-2-1/2	2-1/2	7.50	5.88	.94	50	FBH-875	CAB-B11SOM
FAN-300-3	3	8.25	6.62	.94	50	FBH-875	CAB-B11SOM
FAN-300-3-1/2	3-1/2	9.00	7.25	.94	40	FBH-875	CAB-B11SOM
FAN-300-4	4	10.00	7.88	.94	35	FBH-875	CAB-B11SOM
FAN-300-5	5	11.00	9.25	.94	25	FBH-875	CAB-B11SOM
FAN-300-6	6	12.50	10.62	.94	25	FBH-875	CAB-B11SOM
FAN-300-8	8	15.00	13.00	1.06	15	FBH-1000	CAB-B11SOM
FAN-300-10	10	17.50	15.25	1.18	10	FBH-1125	CAB-B11SOM
FAN-300-12	12	20.50	17.75	1.31	10	FBH-1250	CAB-B11SOM
FAN-300-14	14	23.00	20.25	1.31	8	FBH-1250	CAB-B11SOM
FAN-300-16	16	25.50	22.50	1.44	5	FBH-1375	CAB-B11SOM
FAN-300-18	18	28.00	24.75	1.44	5	FBH-1375	CAB-B14SOM
FAN-300-20	20	30.50	27.00	1.44	5	FBH-1375	CAB-B14SOM
FAN-300-22	22	33.00	29.25	1.68	2	FBH-1625	CAB-B24HOL
FAN-300-24	24	36.00	32.00	1.68	2	FBH-1625	CAB-B24HOL
FAN-300-26A	26	38.25	34.50	1.81	2	FBH-1750	CAB-B24HOL
FAN-300-26B	26	34.12	31.62	1.44	2	FBH-1375	CAB-B24HOL
FAN-300-28A	28	40.75	37.00	1.81	2	FBH-1750	CAB-B24HOL
FAN-300-28B	28	36.25	33.75	1.44	2	FBH-1375	CAB-B24HOL
FAN-300-30A	30	43.00	39.25	1.94	2	FBH-1875	CAB-B24HOL
FAN-300-30B	30	39.00	36.25	1.56	2	FBH-1500	CAB-B24HOL
FAN-300-32A	32	45.25	41.50	2.06	2	FBH-2000	CAB-B24HOL
FAN-300-32B	32	41.50	38.50	1.68	2	FBH-1625	CAB-B24HOL
FAN-300-34A	34	47.50	43.50	2.06	2	FBH-2000	CAB-B24HOL
FAN-300-34B	34	43.62	40.62	1.68	2	FBH-1625	CAB-B24HOL
FAN-300-36A	36	50.00	46.00	2.18	2	FBH-2125	CAB-B24HOL
FAN-300-36B	36	46.12	42.88	1.81	2	FBH-1750	CAB-B24HOL
FAN-300-38A	38	46.00	43.00	1.68	2	FBH-1625	CAB-B24HOL
FAN-300-38B	38	48.12	44.88	1.81	2	FBH-1750	CAB-B24HOL
FAN-300-40A	40	48.75	45.50	1.81	2	FBH-1750	CAB-B24HOL
FAN-300-40B	40	50.12	46.88	1.81	2	FBH-1750	CAB-B24HOL
FAN-300-42A	42	50.75	47.50	1.81	2	FBH-1750	CAB-B24HOL
FAN-300-42B	42	52.50	49.00	1.94	2	FBH-1875	CAB-B24HOL
FAN-300-44A	44	53.25	49.75	1.94	2	FBH-1875	CAB-B24HOL
FAN-300-44B	44	54.50	51.00	1.94	2	FBH-1875	CAB-B24HOL
FAN-300-46A	46	55.75	52.00	2.06	2	FBH-2000	CAB-B24HOL
FAN-300-46B	46	57.50	53.75	2.06	2	FBH-2000	CAB-B24HOL
FAN-300-48A	48	57.75	54.00	2.06	2	FBH-2000	CAB-B24HOL
FAN-300-48B	48	59.50	55.75	2.06	2	FBH-2000	CAB-B24HOL



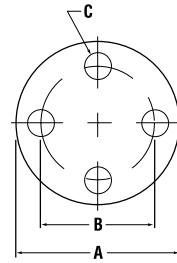


# FLANGE COVERS

## Flange Covers with Bolt Holes FAN Series(cont.)



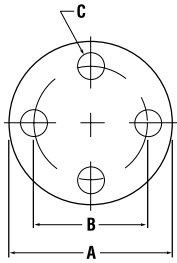
Caplugs No.	Nom Pipe Size (In)	Dimensions			Min Sales Quantity	Fasteners	
		A In	B In	C In		Matching Bolt Hole Plug	Cable Tie
<b>400 Class Pressure Rating</b>							
FAN-400-1/2	1/2	3.75	2.62	.68	150	FBH-625	CAB-B7SOM
FAN-400-3/4	3/4	4.62	3.25	.81	100	FBH-750	CAB-B7SOM
FAN-400-1	1	4.88	3.50	.81	100	FBH-750	CAB-B7SOM
FAN-400-1 1/4	1-1/4	5.25	3.88	.81	100	FBH-750	CAB-B7SOM
FAN-400-1 1/2	1-1/2	6.12	4.50	.94	75	FBH-875	CAB-B11SOM
FAN-400-2	2	6.50	5.00	.81	75	FBH-750	CAB-B11SOM
FAN-400-2 1/2	2-1/2	7.50	5.88	.94	50	FBH-875	CAB-B11SOM
FAN-400-3	3	8.25	6.62	.94	50	FBH-875	CAB-B11SOM
FAN-400-3 1/2	3-1/2	9.00	7.25	1.06	40	FBH-1000	CAB-B11SOM
FAN-400-4	4	10.00	7.88	1.06	35	FBH-1000	CAB-B11SOM
FAN-400-5	5	11.00	9.25	1.06	25	FBH-1000	CAB-B11SOM
FAN-400-6	6	12.50	10.62	1.06	25	FBH-1000	CAB-B11SOM
FAN-400-8	8	15.00	13.00	1.18	15	FBH-1125	CAB-B11SOM
FAN-400-10	10	17.50	15.25	1.31	10	FBH-1250	CAB-B14SOM
FAN-400-12	12	20.50	17.75	1.44	10	FBH-1375	CAB-B14SOM
FAN-400-14	14	23.00	20.25	1.44	8	FBH-1375	CAB-B14SOM
FAN-400-16	16	25.50	22.50	1.56	5	FBH-1500	CAB-B14SOM
FAN-400-18	18	28.00	24.75	1.56	5	FBH-1500	CAB-B14SOM
FAN-400-20	20	30.50	27.00	1.68	5	FBH-1625	CAB-B24HOL
FAN-400-22	22	33.00	29.25	1.81	2	FBH-1750	CAB-B24HOL
FAN-400-24	24	36.00	32.00	1.94	2	FBH-1875	CAB-B24HOL
FAN-400-26A	26	38.25	34.50	1.94	2	FBH-1875	CAB-B24HOL
FAN-400-26B	26	33.50	30.75	1.56	2	FBH-1500	CAB-B24HOL
FAN-400-28A	28	40.75	37.00	2.06	2	FBH-2000	CAB-B24HOL
FAN-400-28B	28	36.00	33.00	1.68	2	FBH-1625	CAB-B24HOL
FAN-400-30A	30	43.00	39.25	2.18	2	FBH-2125	CAB-B24HOL
FAN-400-30B	30	38.25	35.25	1.68	2	FBH-1625	CAB-B24HOL
FAN-400-32A	32	45.25	41.50	2.18	2	FBH-2125	CAB-B24HOL
FAN-400-32B	32	40.75	37.50	1.81	2	FBH-1750	CAB-B24HOL
FAN-400-34A	34	47.50	43.50	2.18	2	FBH-2125	CAB-B24HOL
FAN-400-34B	34	42.75	39.50	1.81	2	FBH-1750	CAB-B24HOL
FAN-400-36A	36	50.00	46.00	2.18	2	FBH-2125	CAB-B24HOL
FAN-400-36B	36	45.50	42.00	1.94	2	FBH-1875	CAB-B24HOL
FAN-400-38A	38	47.50	44.00	1.94	2	FBH-1875	CAB-B24HOL
FAN-400-38B	38	47.50	44.00	1.94	2	FBH-1875	CAB-B24HOL
FAN-400-40A	40	50.00	46.25	2.06	2	FBH-2000	CAB-B24HOL
FAN-400-40B	40	50.00	46.25	2.06	2	FBH-2000	CAB-B24HOL
FAN-400-42A	42	52.00	48.25	2.06	2	FBH-2000	CAB-B24HOL
FAN-400-42B	42	52.00	48.25	2.06	2	FBH-2000	CAB-B24HOL
FAN-400-44A	44	54.50	50.50	2.18	2	FBH-2125	CAB-B24HOL
FAN-400-44B	44	54.50	50.50	2.18	2	FBH-2125	CAB-B24HOL
FAN-400-46A	46	56.75	52.75	2.18	2	FBH-2125	CAB-B24HOL
FAN-400-46B	46	56.75	52.75	2.18	2	FBH-2125	CAB-B24HOL
FAN-400-48A	48	59.50	55.25	2.44	2	FBH-2375	CAB-B24HOL
FAN-400-48B	48	59.50	55.25	2.44	2	FBH-2375	CAB-B24HOL



## Flange Covers with Bolt Holes FAN Series(cont.)



Caplugs No.	Nom Pipe Size (In)	Dimensions			Min Sales Quantity	Fasteners	
		A In	B In	C In		Matching Bolt Hole Plug	Cable Tie
<b>600 Class Pressure Rating</b>							
FAN-600-1/2	1/2	3.75	2.62	.68	150	FBH-625	CAB-B7SOM
FAN-600-3/4	3/4	4.62	3.25	.81	100	FBH-750	CAB-B7SOM
FAN-600-1	1	4.88	3.50	.81	100	FBH-750	CAB-B7SOM
FAN-600-1 1/4	1-1/4	5.25	3.88	.81	100	FBH-750	CAB-B7SOM
FAN-600-1 1/2	1-1/2	6.12	4.50	.94	75	FBH-875	CAB-B11SOM
FAN-600-2	2	6.50	5.00	.81	75	FBH-750	CAB-B11SOM
FAN-600-2 1/2	2-1/2	7.50	5.88	.94	50	FBH-875	CAB-B11SOM
FAN-600-3	3	8.25	6.62	.94	50	FBH-875	CAB-B11SOM
FAN-600-3 1/2	3-1/2	9.00	7.25	1.06	40	FBH-1000	CAB-B11SOM
FAN-600-4	4	10.75	8.50	1.06	25	FBH-1000	CAB-B11SOM
FAN-600-5	5	13.00	10.50	1.18	20	FBH-1125	CAB-B11SOM
FAN-600-6	6	14.00	11.50	1.18	15	FBH-1125	CAB-B11SOM
FAN-600-8	8	16.50	13.75	1.31	15	FBH-1250	CAB-B11SOM
FAN-600-10	10	20.00	17.00	1.44	10	FBH-1375	CAB-B14SOM
FAN-600-12	12	22.00	19.25	1.44	8	FBH-1375	CAB-B11SOM
FAN-600-14	14	23.75	20.75	1.56	8	FBH-1500	CAB-B14SOM
FAN-600-16	16	27.00	23.75	1.68	5	FBH-1625	CAB-B14SOM
FAN-600-18	18	29.25	25.75	1.81	5	FBH-1750	CAB-B14SOM
FAN-600-20	20	32.00	28.50	1.81	4	FBH-1750	CAB-B14SOM
FAN-600-22	22	34.25	30.63	1.81	2	FBH-1750	CAB-B14SOM
FAN-600-24	24	37.00	33.00	2.06	2	FBH-2000	CAB-B24HOL
FAN-600-26A	26	40.00	36.00	2.06	2	FBH-2000	CAB-B24HOL
FAN-600-26B	26	35.00	31.75	1.81	2	FBH-1750	CAB-B24HOL
FAN-600-28A	28	42.25	38.00	2.18	2	FBH-2125	CAB-B24HOL
FAN-600-28B	28	37.50	34.00	1.94	2	FBH-1875	CAB-B24HOL
FAN-600-30A	30	44.50	40.25	2.18	2	FBH-2125	CAB-B24HOL
FAN-600-30B	30	40.25	36.50	2.06	2	FBH-2000	CAB-B24HOL
FAN-600-32A	32	47.00	42.50	2.44	2	FBH-2375	CAB-B24HOL
FAN-600-32B	32	42.75	38.75	2.18	2	FBH-2125	CAB-B24HOL
FAN-600-34A	34	49.00	44.50	2.44	2	FBH-2375	CAB-B24HOL
FAN-600-34B	34	45.75	41.50	2.44	2	FBH-2375	CAB-B24HOL
FAN-600-36A	36	51.75	47.00	2.68	2	FBH-2625	CAB-B24HOL
FAN-600-36B	36	47.75	43.50	2.44	2	FBH-2375	CAB-B24HOL
FAN-600-38A	38	50.00	45.75	2.44	2	FBH-2375	CAB-B24HOL
FAN-600-38B	38	50.00	45.75	2.44	2	FBH-2375	CAB-B24HOL
FAN-600-40A	40	52.00	47.75	2.44	2	FBH-2375	CAB-B24HOL
FAN-600-40B	40	52.00	47.75	2.44	2	FBH-2375	CAB-B24HOL
FAN-600-42A	42	55.25	50.50	2.68	2	FBH-2625	CAB-B24HOL
FAN-600-42B	42	55.25	50.50	2.68	2	FBH-2625	CAB-B24HOL
FAN-600-44A	44	57.25	52.50	2.68	2	FBH-2625	CAB-B24HOL
FAN-600-44B	44	57.25	52.50	2.68	2	FBH-2625	CAB-B24HOL
FAN-600-46A	46	59.50	54.75	2.68	2	FBH-2625	CAB-B24HOL
FAN-600-46B	46	59.50	54.75	2.68	2	FBH-2625	CAB-B24HOL

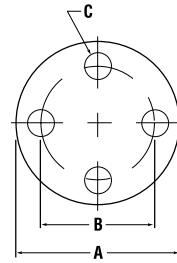


# FLANGE COVERS

## Flange Covers with Bolt Holes FAN Series(cont.)



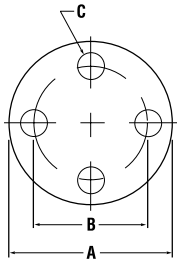
Caplugs No.	Nom Pipe Size (In)	Dimensions			Min Sales Quantity	Fasteners	
		A In	B In	C In		Matching Bolt Hole Plug	Cable Tie
<b>900 Class Pressure Rating</b>							
FAN-900-1/2	1/2	4.75	3.25	.94	100	FBH-875	CAB-B11SOM
FAN-900-3/4	3/4	5.12	3.50	.94	100	FBH-875	CAB-B11SOM
FAN-900-1	1	5.88	4.00	1.06	75	FBH-1000	CAB-B11SOM
FAN-900-1 1/4	1-1/4	6.25	4.38	1.06	75	FBH-1000	CAB-B11SOM
FAN-900-1 1/2	1-1/2	7.00	4.88	1.19	50	FBH-1125	CAB-B11SOM
FAN-900-2	2	8.50	6.50	1.06	50	FBH-1000	CAB-B11SOM
FAN-900-2 1/2	2-1/2	9.62	7.50	1.19	40	FBH-1125	CAB-B11SOM
FAN-900-3	3	9.50	7.50	1.06	40	FBH-1000	CAB-B11SOM
FAN-900-4	4	11.50	9.25	1.31	25	FBH-1250	CAB-B11SOM
FAN-900-5	5	13.75	11.00	1.44	20	FBH-1375	CAB-B14SOM
FAN-900-6	6	15.00	12.50	1.31	15	FBH-1250	CAB-B14SOM
FAN-900-8	8	18.50	15.50	1.56	10	FBH-1500	CAB-B14SOM
FAN-900-10	10	21.50	18.50	1.56	8	FBH-1500	CAB-B14SOM
FAN-900-12	12	24.00	21.00	1.56	8	FBH-1500	CAB-B24HOL
FAN-900-14	14	25.25	22.00	1.69	5	FBH-1625	CAB-B24HOL
FAN-900-16	16	27.75	24.25	1.81	5	FBH-1750	CAB-B24HOL
FAN-900-18	18	31.00	27.00	2.06	5	FBH-2000	CAB-B24HOL
FAN-900-20	20	33.75	29.50	2.19	2	FBH-2125	CAB-B24HOL
FAN-900-24	24	41.00	35.50	2.69	2	FBH-2625	CAB-B24HOL
FAN-900-26A	26	42.75	37.50	2.94	2	FBH-2875	CAB-B24HOL
FAN-900-26B	26	40.25	35.50	2.68	2	FBH-2625	CAB-B24HOL
FAN-900-28A	28	46.00	40.25	3.18	2	n/a	CAB-B24HOL
FAN-900-28B	28	43.50	38.25	2.94	2	FBH-2875	CAB-B24HOL
FAN-900-30A	30	48.50	42.75	3.18	2	n/a	CAB-B36HOL
FAN-900-30B	30	46.50	40.75	3.18	2	n/a	CAB-B24HOL
FAN-900-32A	32	51.75	45.50	3.44	2	n/a	CAB-B36HOL
FAN-900-32B	32	48.75	43.00	3.18	2	n/a	CAB-B36HOL
FAN-900-34A	34	55.00	48.25	3.68	2	n/a	CAB-B36HOL
FAN-900-34B	34	51.75	45.50	3.44	2	n/a	CAB-B36HOL
FAN-900-36A	36	57.50	50.75	3.68	2	n/a	CAB-B36HOL
FAN-900-36B	36	53.00	47.25	3.18	2	n/a	CAB-B36HOL
FAN-900-38A	38	57.50	50.75	3.68	2	n/a	CAB-B36HOL
FAN-900-38B	38	57.50	50.75	3.68	2	n/a	CAB-B36HOL
FAN-900-40A	40	59.50	52.75	3.68	2	n/a	CAB-B36HOL
FAN-900-40B	40	59.50	52.75	3.68	2	n/a	CAB-B36HOL



## Flange Covers with Bolt Holes FAN Series(cont.)



Caplugs No.	Nom Pipe Size (In)	Dimensions			Min Sales Quantity	Fasteners	
		A In	B In	C In		Matching Bolt Hole Plug	Cable Tie
<b>1500 Class Pressure Rating</b>							
FAN-1500-1/2	1/2	4.75	3.25	.94	100	FBH-875	CAB-B11SOM
FAN-1500-3/4	3/4	5.12	3.50	.94	100	FBH-875	CAB-B11SOM
FAN-1500-1	1	5.88	4.00	1.06	75	FBH-1000	CAB-B11SOM
FAN-1500-1 1/4	1-1/4	6.25	4.38	1.06	75	FBH-1000	CAB-B11SOM
FAN-1500-1 1/2	1-1/2	7.00	4.88	1.19	50	FBH-1125	CAB-B11SOM
FAN-1500-2	2	8.50	6.50	1.06	50	FBH-1000	CAB-B11SOM
FAN-1500-2 1/2	2-1/2	9.62	7.50	1.19	40	FBH-1125	CAB-B11SOM
FAN-1500-3	3	10.50	8.00	1.31	25	FBH-1250	CAB-B14SOM
FAN-1500-4	4	12.25	9.50	1.44	25	FBH-1375	CAB-B14SOM
FAN-1500-5	5	14.75	11.50	1.69	15	FBH-1625	CAB-B24HOL
FAN-1500-6	6	15.50	12.50	1.56	15	FBH-1500	CAB-B24HOL
FAN-1500-8	8	19.00	15.50	1.81	10	FBH-1750	CAB-B24HOL
FAN-1500-10	10	23.00	19.00	2.06	8	FBH-2000	CAB-B24HOL
FAN-1500-12	12	26.50	22.50	2.19	5	FBH-2125	CAB-B24HOL
FAN-1500-14	14	29.50	25.00	2.44	5	FBH-2375	CAB-B24HOL
FAN-1500-16	16	32.50	27.75	2.69	4	FBH-2625	CAB-B24HOL
FAN-1500-18	18	36.00	30.50	2.94	2	FBH-2875	CAB-B24HOL
FAN-1500-20	20	38.75	32.75	3.19	2	n/a	CAB-B36HOL
FAN-1500-24	24	46.00	39.00	3.69	2	n/a	CAB-B36HOL
<b>2500 Class Pressure Rating</b>							
FAN-2500-1/2	1/2	5.25	3.50	.94	100	FBH-875	CAB-B11SOM
FAN-2500-3/4	3/4	5.50	3.75	.94	75	FBH-875	CAB-B11SOM
FAN-2500-1	1	6.25	4.25	1.06	75	FBH-1000	CAB-B11SOM
FAN-2500-1 1/4	1-1/4	7.25	5.13	1.19	50	FBH-1125	CAB-B11SOM
FAN-2500-1 1/2	1-1/2	8.00	5.75	1.31	50	FBH-1250	CAB-B11SOM
FAN-2500-2	2	9.25	6.75	1.19	40	FBH-1125	CAB-B14SOM
FAN-2500-2 1/2	2-1/2	10.50	7.75	1.31	25	FBH-1250	CAB-B14SOM
FAN-2500-3	3	12.00	9.00	1.44	25	FBH-1375	CAB-B14SOM
FAN-2500-4	4	14.00	10.75	1.69	15	FBH-1625	CAB-B24HOL
FAN-2500-5	5	16.50	12.75	1.94	15	FBH-1875	CAB-B24HOL
FAN-2500-6	6	19.00	14.50	2.19	10	FBH-2125	CAB-B24HOL
FAN-2500-8	8	21.75	17.25	2.19	8	FBH-2125	CAB-B24HOL
FAN-2500-10	10	26.50	21.25	2.69	5	FBH-2625	CAB-B24HOL
FAN-2500-12	12	30.00	24.38	2.94	5	FBH-2875	CAB-B36HOL

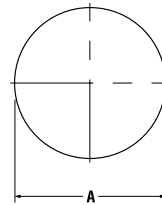


# FLANGE COVERS

## Raised-Face Protectors FAR Series

Self-adhesive covers that preserve sealing surfaces on any ANSI B-16.5 or ANSI B-16.47 raised-face flange. Simply peel back off and press on. Remains intact with adhesive until removed, leaving no film or residue.

Material: High-Density Polyethylene Color: Black

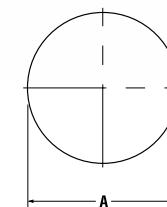


Caplugs No.	Dimensions		Packaging Minimum Sales Quantity
	Nominal Size In	A In	
<b>All Classes</b>			
FAR-1/2	1/2	1.38	100
FAR-3/4	3/4	1.69	100
FAR-1	1	2.00	100
FAR-1 1/4	1-1/4	2.50	80
FAR-1 1/2	1-1/2	2.88	80
FAR-2	2	3.62	75
FAR-2 1/2	2-1/2	4.12	75
FAR-3	3	5.00	50
FAR-3 1/2	3-1/2	5.50	50
FAR-4	4	6.19	35
FAR-5	5	7.31	25
FAR-6	6	8.50	20
FAR-8	8	10.62	10
FAR-10	10	12.75	10
FAR-12	12	15.00	5
FAR-14	14	16.25	5
FAR-16	16	18.50	5
FAR-18	18	21.00	4
FAR-20	20	23.00	2
FAR-22	22	25.25	2
FAR-24	24	27.25	2
<b>26" to 48" Class Pressure Rating A 150 Flanges</b>			
FAR-26A	26	29.50	2
FAR-28A	28	31.50	2
FAR-30A	30	33.75	2
FAR-32A	32	36.00	2
FAR-34A	34	38.00	2
FAR-36A	36	40.25	2
FAR-38A	38	42.25	2
FAR-40A	40	44.25	2
FAR-42A	42	47.00	2
FAR-44A	44	49.00	2
FAR-46A	46	51.00	2
FAR-48A	48	53.50	2

Caplugs No.	Dimensions		Packaging Minimum Sales Quantity
	Nominal Size In	A In	
<b>26" to 50" Class Pressure Rating B 150 Flanges</b>			
FAR-150-26B	26	28.00	2
FAR-150-28B	28	30.00	2
FAR-150-30B	30	32.00	2
FAR-150-32B	32	34.00	2
FAR-150-34B	34	36.25	2
FAR-150-36B	36	38.25	2
FAR-150-38B	38	40.25	2
FAR-150-40B	40	42.50	2
FAR-150-42B	42	44.50	2
FAR-150-44B	44	46.50	2
FAR-150-46B	46	48.62	2
FAR-150-48B	48	50.75	2
FAR-150-50B	50	52.75	2
<b>26" to 50" Class Pressure Rating A 300 Flanges</b>			
FAR-300-26A	26	29.50	2
FAR-300-28A	28	31.50	2
FAR-300-30A	30	33.75	2
FAR-300-32A	32	36.00	2
FAR-300-34A	34	38.00	2
FAR-300-36A	36	40.25	2
FAR-300-38A	38	40.50	2
FAR-300-40A	40	42.75	2
FAR-300-42A	42	44.75	2
FAR-300-44A	44	47.00	2
FAR-300-46A	46	49.00	2
FAR-300-48A	48	51.25	2
FAR-300-50A	50	53.50	2
<b>26" to 48" Class Pressure Rating B 300 Flanges</b>			
FAR-300-26B	26	29.00	2
FAR-300-28B	28	31.00	2
FAR-300-30B	30	33.25	2
FAR-300-32B	32	35.50	2
FAR-300-34B	34	37.50	2
FAR-300-36B	36	39.75	2
FAR-300-38B	38	41.75	2
FAR-300-40B	40	43.88	2
FAR-300-42B	42	46.00	2
FAR-300-44B	44	48.00	2
FAR-300-46B	46	50.00	2
FAR-300-48B	48	52.25	2

## Raised-Face Protectors FAR Series (cont.)

Caplugs No.	Dimensions		Packaging Minimum Sales Quantity
	Nominal Size In	A In	
<b>26" to 50" Class Pressure Rating A 400 Flanges</b>			
FAR-400-26A	26	29.50	2
FAR-400-28A	28	31.50	2
FAR-400-30A	30	33.75	2
FAR-400-32A	32	36.00	2
FAR-400-34A	34	38.00	2
FAR-400-36A	36	40.25	2
FAR-400-38A	38	40.75	2
FAR-400-40A	40	43.00	2
FAR-400-42A	42	45.00	2
FAR-400-44A	44	47.25	2
FAR-400-46A	46	49.50	2
FAR-400-48A	48	51.50	2
FAR-400-50A	50	53.62	2
<b>26" to 50" Class Pressure Rating B 400 Flanges</b>			
FAR-400-26B	26	28.00	2
FAR-400-28B	28	30.00	2
FAR-400-30B	30	32.25	2
FAR-400-32B	32	34.38	2
FAR-400-34B	34	36.50	2
FAR-400-36B	36	38.62	2
FAR-400-38B	38	40.75	2
FAR-400-40B	40	43.00	2
FAR-400-42B	42	45.00	2
FAR-400-44B	44	47.25	2
FAR-400-46B	46	49.50	2
FAR-400-48B	48	51.50	2
FAR-400-50B	50	53.62	2
<b>26" to 48" Class Pressure Rating A 600 Flanges</b>			
FAR-600-26A	26	29.50	2
FAR-600-28A	28	31.50	2
FAR-600-30A	30	33.75	2
FAR-600-32A	32	36.00	2
FAR-600-34A	34	38.00	2
FAR-600-36A	36	40.25	2
FAR-600-38A	38	41.50	2
FAR-600-40A	40	43.75	2
FAR-600-42A	42	46.00	2
FAR-600-44A	44	48.25	2
FAR-600-46A	46	50.25	2
FAR-600-48A	48	52.50	2



Caplugs No.	Dimensions		Packaging Minimum Sales Quantity
	Nominal Size In	A In	
<b>26" to 48" Class Pressure Rating B 600 Flanges</b>			
FAR-600-26B	26	28.62	2
FAR-600-28B	28	30.88	2
FAR-600-30B	30	33.12	2
FAR-600-32B	32	35.25	2
FAR-600-34B	34	37.50	2
FAR-600-36B	36	39.75	2
FAR-600-38B	38	41.50	2
FAR-600-40B	40	43.75	2
FAR-600-42B	42	46.00	2
FAR-600-44B	44	48.25	2
FAR-600-46B	46	50.25	2
FAR-600-48B	48	52.50	2
<b>26" to 46" Class Pressure Rating A 900 Flanges</b>			
FAR-900-26A	26	30.00	2
FAR-900-28A	28	32.25	2
FAR-900-30A	30	34.50	2
FAR-900-32A	32	36.50	2
FAR-900-34A	34	39.00	2
FAR-900-36A	36	40.50	2
FAR-900-38A	38	43.25	2
FAR-900-40A	40	45.75	2
FAR-900-42A	42	47.75	2
FAR-900-44A	44	50.00	2
FAR-900-46A	46	52.50	2
<b>26" to 46" Class Pressure Rating B 900 Flanges</b>			
FAR-900-26B	26	29.50	2
FAR-900-28B	28	31.50	2
FAR-900-30B	30	33.75	2
FAR-900-32B	32	36.00	2
FAR-900-34B	34	38.00	2
FAR-900-36B	36	40.25	2
FAR-900-38B	38	43.25	2
FAR-900-40B	40	45.75	2
FAR-900-42B	42	47.75	2
FAR-900-44B	44	50.00	2
FAR-900-46B	46	52.50	2
<b>26" to 50" Class Pressure Rating B 75 Flanges</b>			
FAR-75-26B	26	27.75	2
FAR-75-28B	28	29.75	2
FAR-75-30B	30	31.75	2
FAR-75-32B	32	33.75	2
FAR-75-34B	34	35.75	2
FAR-75-36B	36	38.00	2
FAR-75-38B	38	40.00	2
FAR-75-40B	40	42.00	2
FAR-75-42B	42	44.00	2
FAR-75-44B	44	46.25	2
FAR-75-46B	46	48.25	2
FAR-75-48B	48	50.25	2
FAR-75-50B	50	52.25	2



# FLANGE COVERS

## Donut Seat Pocket Protector DSP Series

Protects the seat pocket in the bore of the API wellhead flanges. Referred to as a "donut" because of its ring shape that fits nicely in the area requiring protection during the refurbishment process, while the thickness of the material allows the protector to hold up to shot peening and grinding during the cleaning process.

Material: High-Density Polyethylene Color: Black



Caplugs No.	Part Dimensions	API Flange Size	Carton Quantity
DSP-1812-15M	CUS-RING-3.00" OD X 1.86" ID	1 3/16" 15000#	50
DSP-2060-10M	CUS-RING-3.00" OD X 1.86" ID	2 1/16" 10000#	50
DSP-2562-15M	CUS-RING-3.83" OD X 2.61" ID	2 9/16" 15000#	50
DSP-3060-10-15M	CUS-RING-4.51" OD X 3.11" ID	3 1/16" 10000-15000#	50
DSP-4060-10M	CUS-RING-5.47" OD X 4.11" ID	4 1/16" 10000#	20
DSP-4060-15M	CUS-RING-5.91" OD X 4.11" ID	4 1/16" 15000#	20
DSP-4060-5M	CUS-RING-5.21" OD X 4.17" ID	4 1/16" 5000#	50
DSP-5125-10M	CUS-RING-6.83" OD X 5.18" ID	5 1/8" 10000#	20
DSP-7060-10M-2200	CUS-RING-9.70" OD X 7.11" ID	7 1/16" 10000# -2200	20
DSP-7060-10M-2300	CUS-RING-8.95" OD X 7.11" ID	7 1/16" 10000# -2300	20
DSP-7060-15M	CUS-RING-10.45" OD X 7.11" ID	7 1/16" 15000#	20
DSP-9000-10M	CUS-RING-11.95" OD X 9.05" ID	9" 10000#	20

## Bolt Hole Plugs FBH Series

Securely fastens FAN Series onto flange. Outer ribs accommodate various hole diameter tolerances and a thick flange allows for easy removal.

Material: High-Density Polyethylene Color: Black



Caplugs No.	Bolt Hole Size In	Packaging		Used With
		Carton Quantity	Mini Pak Quantity	
FBH-625	5/8	800	160	FAN-150-1/2, 150-3/4, 150-1, 150-1-1/4, 150-1-1/2, 300-1/2, 600-1/2
FBH-750	3/4	800	160	FAN-150-2, 150-2-1/2, 150-3, 150-3-1/2, 300-3/4, 300-1, 300-1-1/4, 300-2, 600-3/4, 600-1, 600-1-1/4, 600-2
FBH-875	7/8	800	160	FAN-150-4, 150-5, 150-6, 150-8, 300-1-1/2, 300-2-1/2, 300-3, 300-3-1/2, 300-4, 300-5, 300-6, 600-1-1/2, 600-3, 900-1/2, 900-3/4
FBH-1000	1	800	160	FAN-150-10, 150-12, 300-8, 600-3-1/2, 600-4, 900-1, 900-1-1/4, 900-2, 900-3
FBH-1125	1-1/8	600	120	FAN-150-14, 150-16, 300-10, 600-5, 600-6, 900-1-1/2, 900-2-1/2
FBH-1250	1-1/4	600	120	FAN-150-18, 150-20, 300-12, 300-14, 600-8, 900-4, 900-6
FBH-1375	1-3/8	600	120	FAN-300-16, 300-18, 600-10, 600-12, 900-5
FBH-1500	1-1/2	400	80	FAN-600-14, 900-8, 900-10, 900-12
FBH-1625	1-5/8	400	80	FAN-600-16, 900-14
FBH-1750	1-3/4	500	100	FAN-300-26A, 300-28A, 300-38B, 300-40A, 300-40B, 300-42A, 400-22, 400-32B, 400-34B, 600-22, 600-26B
FBH-1875	1-7/8	400	80	FAN-300-42B, 300-44A, 300-44B, 400-24, 400-26A, 400-36B, 400-38A, 400-38B, 600-28B, 2500-5
FBH-2000	2	400	80	FAN-300-32A, 300-34A, 300-46A, 300-46B, 300-48A, 300-48B, 400-28A, 400-40A, 400-40B, 400-42A, 400-42B, 600-24, 600-26A, 600-30B, 900-18
FBH-2125	2-1/8	300	60	FAN-400-30A, 400-32A, 400-34A, 400-36A, 400-44A, 400-44B, 400-46A, 400-46B, 600-28A, 600-30A, 600-32B, 2500-6, 2500-8
FBH-2375	2-3/8	300	60	FAN-400-48A, 400-48B, 600-32A, 600-34A, 600-34B, 600-36B, 600-38A, 600-38B, 600-40A, 600-40B, 1500-14
FBH-2625	2-5/8	200	40	FAN-600-36A, 600-42A, 600-42B, 600-44A, 600-44B, 600-46A, 600-46B, 900-24, 900-26B, 1500-16, 2500-10
FBH-2875	2-7/8	200	40	FAN-900-26A, 900-28A, 1500-18, 2500-12

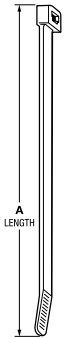
## Cable Ties CAB Series

Can be used with FAN Series through bolt holes. Designed from durable 6/6 nylon in a variety of lengths and strengths.

Material: Nylon Color: Natural, UV Black



Caplugs No.	Color	Dimensions			Packaging
		A In	Tensile Strength lbs	Max Bundle Diameter In	Quantity / Bag
CAB-B4M9M	Natural	4.10	18	.62	1000
CAB-B4MOM	UV Black	4.10	18	.62	1000
CAB-B6M9M	Natural	6.10	18	1.25	1000
CAB-B6MOM	UV Black	6.10	18	1.25	1000
CAB-B8M9M	Natural	8.10	18	2.00	1000
CAB-B8MOM	UV Black	8.10	18	2.00	1000
CAB-B519M	Natural	5.70	40	1.25	1000
CAB-B510M	UV Black	5.70	40	1.25	1000
CAB-B819M	Natural	8.20	40	2.00	1000
CAB-B810M	UV Black	8.20	40	2.00	1000
CAB-B7S9M	Natural	8.00	50	2.00	1000
CAB-B7S0M	UV Black	8.00	50	2.00	1000
CAB-B11S9M	Natural	11.80	50	3.00	1000
CAB-B11S0M	UV Black	11.80	50	3.00	1000
CAB-B14S9M	Natural	14.80	50	4.00	1000
CAB-B14S0M	UV Black	14.80	50	4.00	1000
CAB-B8L9C	Natural	9.00	120	2.00	100
CAB-B8LOC	UV Black	9.00	120	2.00	100
CAB-B11L9C	Natural	12.10	120	3.00	100
CAB-B11LOC	UV Black	12.10	120	3.00	100
CAB-B14L9C	Natural	15.00	120	4.00	100
CAB-B14LOC	UV Black	15.00	120	4.00	100
CAB-B24H9L	Natural	25.20	175	7.00	50
CAB-B24H0L	UV Black	25.20	175	7.00	50
CAB-B36H9L	Natural	36.50	175	10.70	50
CAB-B36H0L	UV Black	36.50	175	10.70	50
CAB-B48H9L	Natural	48.00	175	15.00	50
CAB-B48H0L	UV Black	48.00	175	15.00	50



**CAB-200TT**  
Tensioning tool for use with 18 lb. through 50 lb. cable ties



**CAB-300TT**  
Tensioning tool for use with 120 lb. through 175 lb. cable ties





YOUR  
SOLUTIONS  
PROVIDER

- 12,000+ catalog items in stock and ready to ship
- 400,000,000 parts
- 6 different molding processes
- Comprehensive molding capabilities
- World-class customer service



To view our 12,000+ protective products,  
visit [www.caplugs.com](http://www.caplugs.com).





Caplugs and Tri-Star Protectors -  
global companies offering personalized service.



○ Manufacturing Plants   ● Sales Representatives

[www.tristarprotectors.com](http://www.tristarprotectors.com) // [sales@tristarprotectors.com](mailto:sales@tristarprotectors.com) // 281.399.2600